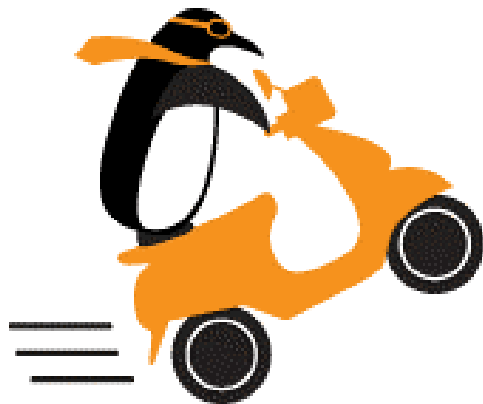


FY07/Q2 Results Presentation

ACCESS' Innovative Technology and Strategy



2006-09-15

ACCESS Co., Ltd.

Co-Founder and CTO

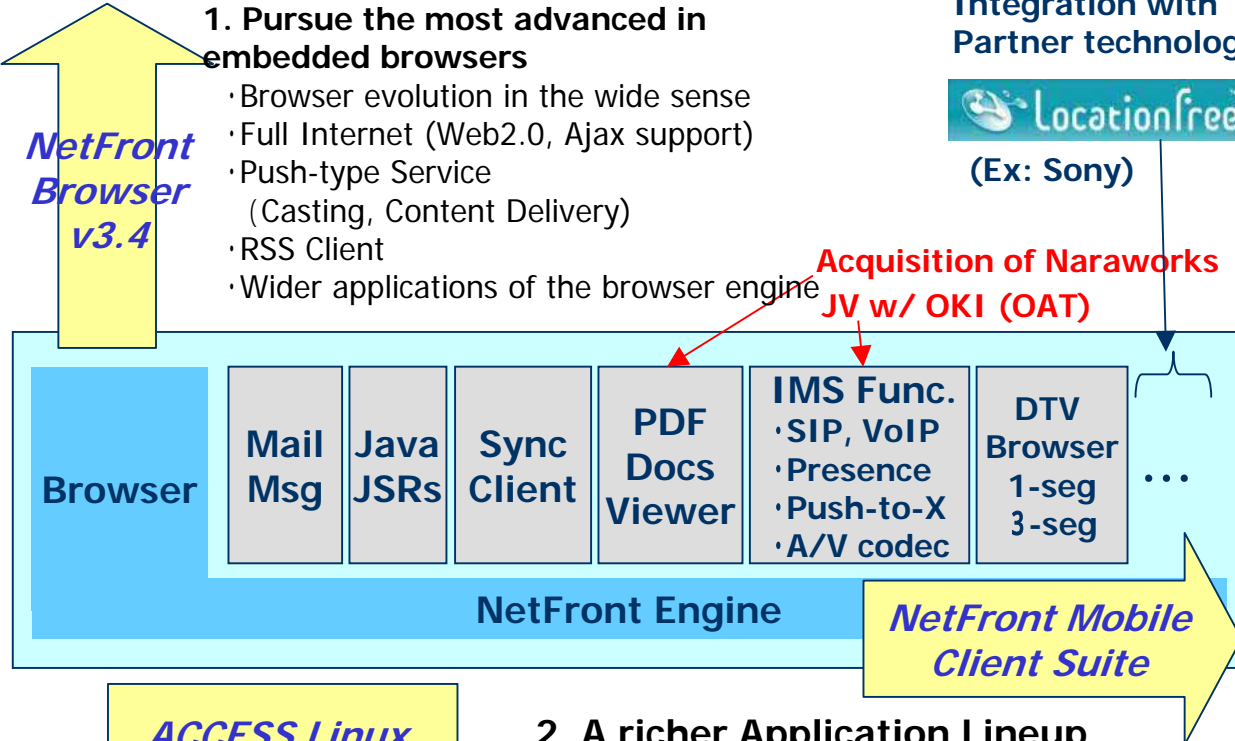
Dr. Tomihisa Kamada

Where ACCESS is heading

We will provide a Total Solution by preemptively capturing new device requirements / functionalities. We will also provide solutions for Operators for them to begin new services.

1. Pursue the most advanced in embedded browsers

- Browser evolution in the wide sense
- Full Internet (Web2.0, Ajax support)
- Push-type Service (Casting, Content Delivery)
- RSS Client
- Wider applications of the browser engine



Integration with Partner technologies



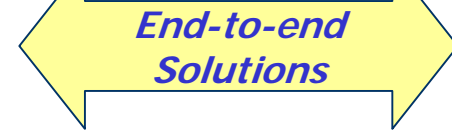
Server Software

Redzero社

- Sync Server
- RSS Server

ACCESS Media Solutions

- Music distribution



Home Gateway
NetFront Living Connect (DLNA)
 家庭と双方向に連携

IP Infusion 買収

2. A richer Application Lineup

- Integrate a sophisticated applications suite. (**Application Coordination**)

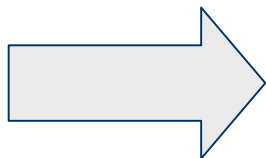
Applications run in multi-tasking mode. An integrated software, including the OS/Platform is required.

3. Provide Turnkey solutions that include Platforms (Linux base)

- (1) Strong relationships with Operators
 - Promoting advanced services with the world's top operators.
- (2) Customer base through licensing relationships (over 30 mobile phone manufacturers)
 - Exclusive: SAMSUNG, SONY Ericsson
 - Major Vendors: Nokia, Motorola, LG
 - Supporting global advances of Japanese vendors (NEC, Sanyo, Sharp, ...)
 - Already licensing to Chinese vendors with high potential (Amoi, ZTE, Haier, ...)
- (3) Aggressive involvement in Standardization Activities
 - In addition to W3C, OMA ...
 - Widely recognized in the Linux arena.
 - Steering committee chare of OSDL MLI
 - Founding member of LiPS
 - Contributing modules to Open Source.
- (4) A strong engineering force at the Global level
 - a force of over 1,000 engineers (working closely with operators and device manufacturers)
- (5) Begun to provide End-to-End solutions to Communication Operators
- (6) Wide variety of initiatives in the Mobile + Home area.

ACCESS has been continually growing its business through adoption of new technology, developing new markets, and timely execution of product strategies.

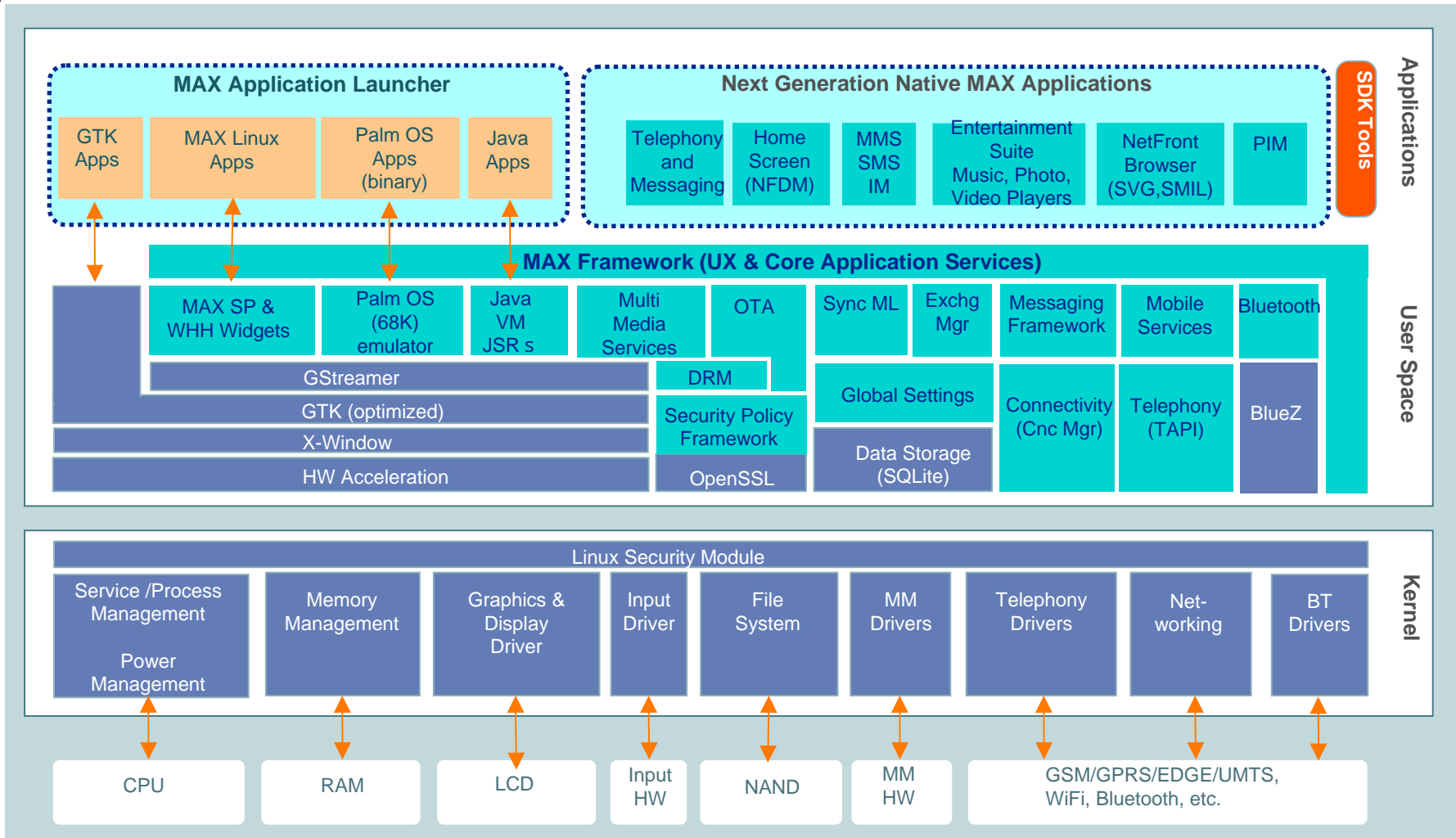
- Application Suite Strategy
 - Provide the browser, messaging, and Java as a set.
 - Example: FOMA Sanyo, Nokia, NEC, LG, ...
 - Being a component-only vendor would become more difficult.
- 1-seg on a rise
 - Had been involved from definition of specifications. Dominating the 1-seg browser market.
- SyncML (Technology to store address books on the server, and synchronizing the differences)
 - Operators aggressively adopting this new technology in preparation for Number Portability. Also providing the Server-side.
- NetFront Living Connect (DLNA – Coordination of Home Electronics)
 - Many leads. High potential.



In addition, our Platform Strategy based on Linux

ACCESS Linux Platform (ALP) is ...

A platform, based on Linux, that integrates all the software required on a mobile phone. Promoting 3rd party software development through releases of the SDK. The first case of such an integrated Linux platform, in the world.

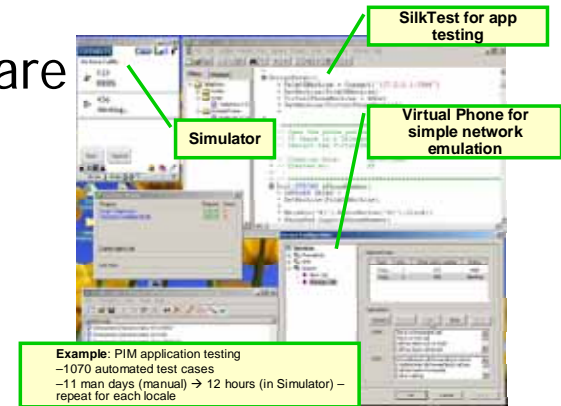


Other Linux-based phones already exist, such as FOMA (NEC, Panasonic) and Motorola.

- These Linux Phones simply use Linux as the OS.
Proved that Linux can be used on a mobile phone.

- ALP provides a Platform for mobile phone software

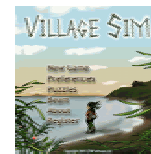
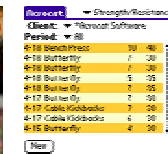
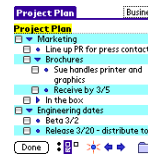
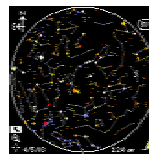
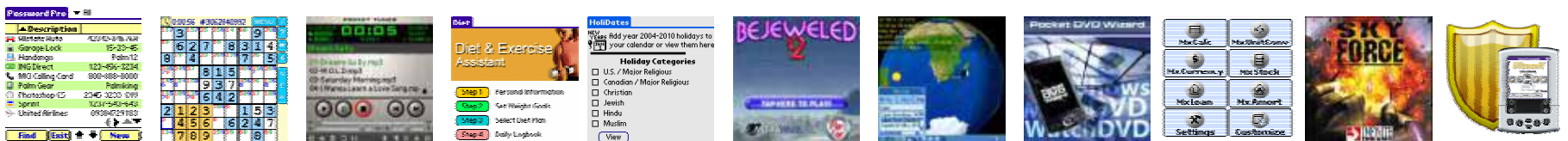
- Define an API, and distribute its SDK.
- Not only will we develop applications ourselves, but would also support 3rd party application developers
- Announced the **ACCESS Developer Network**
Will support software developers for the ALP, including PalmOS developers (more than 420,000 developers).



Eclipse based tools



*PalmSource
Developer
Day*



- ◆ One of the advantages of ACCESS Linux Platform (PalmOS Emulator) is that PalmOS Applications run as it is, in binary. There are approximately 20,000 PalmOS applications and ALP inherits this.
- ◆ Installers and Launchers are made so that ALP native applications and PalmOS applications can be treated alike.
- ◆ This allows Palm developers and Linux developers an easy entry into developing for the ALP.
- ◆ Of course Java applications can also run on the ALP, with its built-in Java environment.



Increasing Importance of UI

With mobile phones continue to be more sophisticated, the phone's usability and its user interface is becoming more and more important. For this we leverage PalmSource's design know-how.

Changing the Background

... use for branding.



UI Theming

... allow the user to change themes.

... allow customizations.

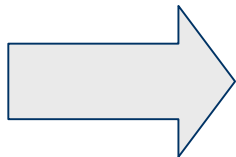


The Linux Kernel is released as open source and a variety of open source components such as GTK and GStreamer makes it flexible, scalable and open.

However, in contrast to its flexibility, standardization (API's, etc) has not gone far. Therefore, there needs to be good balance of flexibility and standardization.

- OSDL ... Leading Open Source organization. Similar groups for Linux kernel and Mobile also established.
- LiPS ... France Telecom, TIM, ... involved. Definition of Platform API.
- CELF ... Consumer Linux
- 6-Company Alliance (DoCoMo, Vodafone, NEC, Panasonic, Samsung, Motorola)

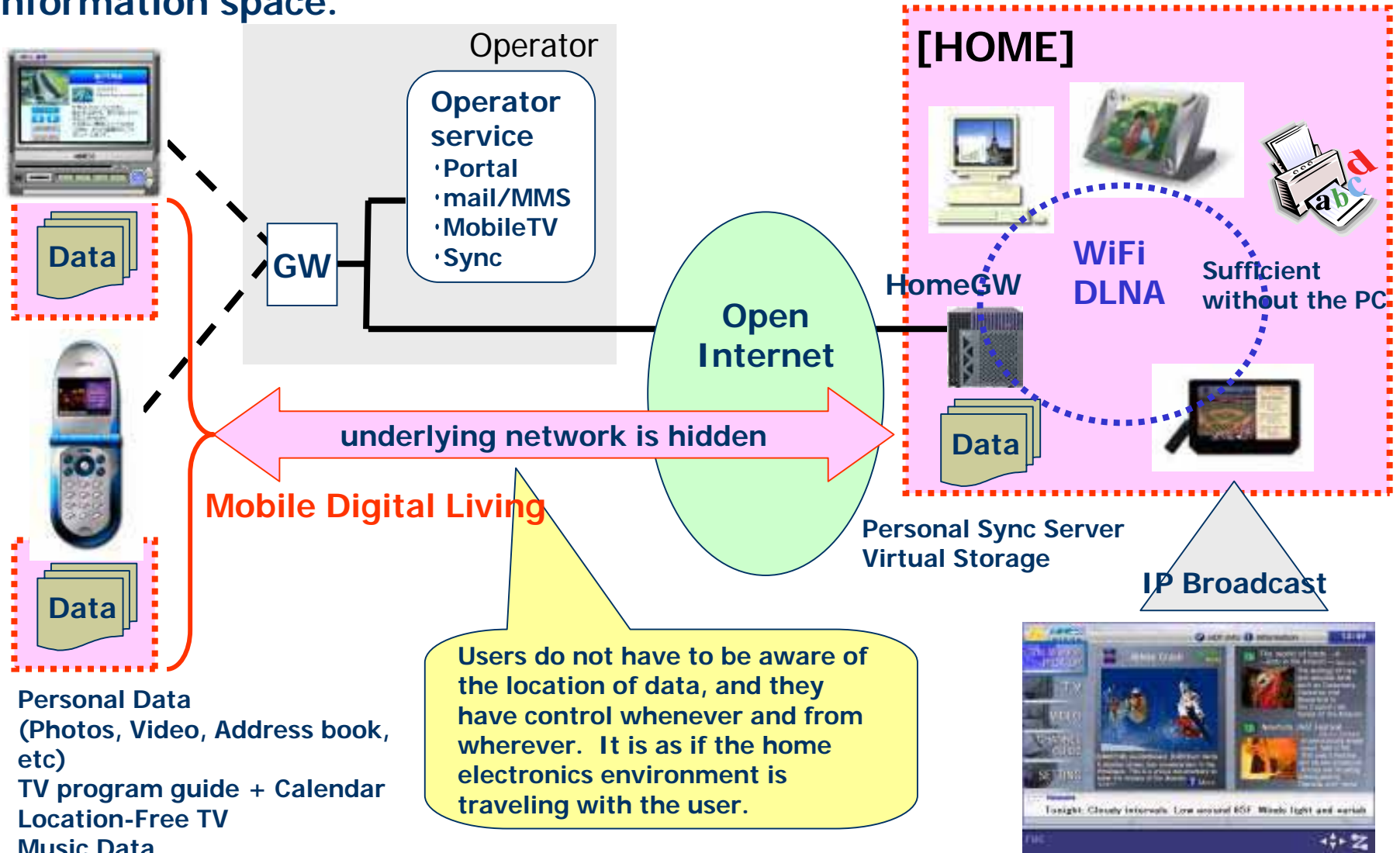
Though different in approach, the Goal is the same.

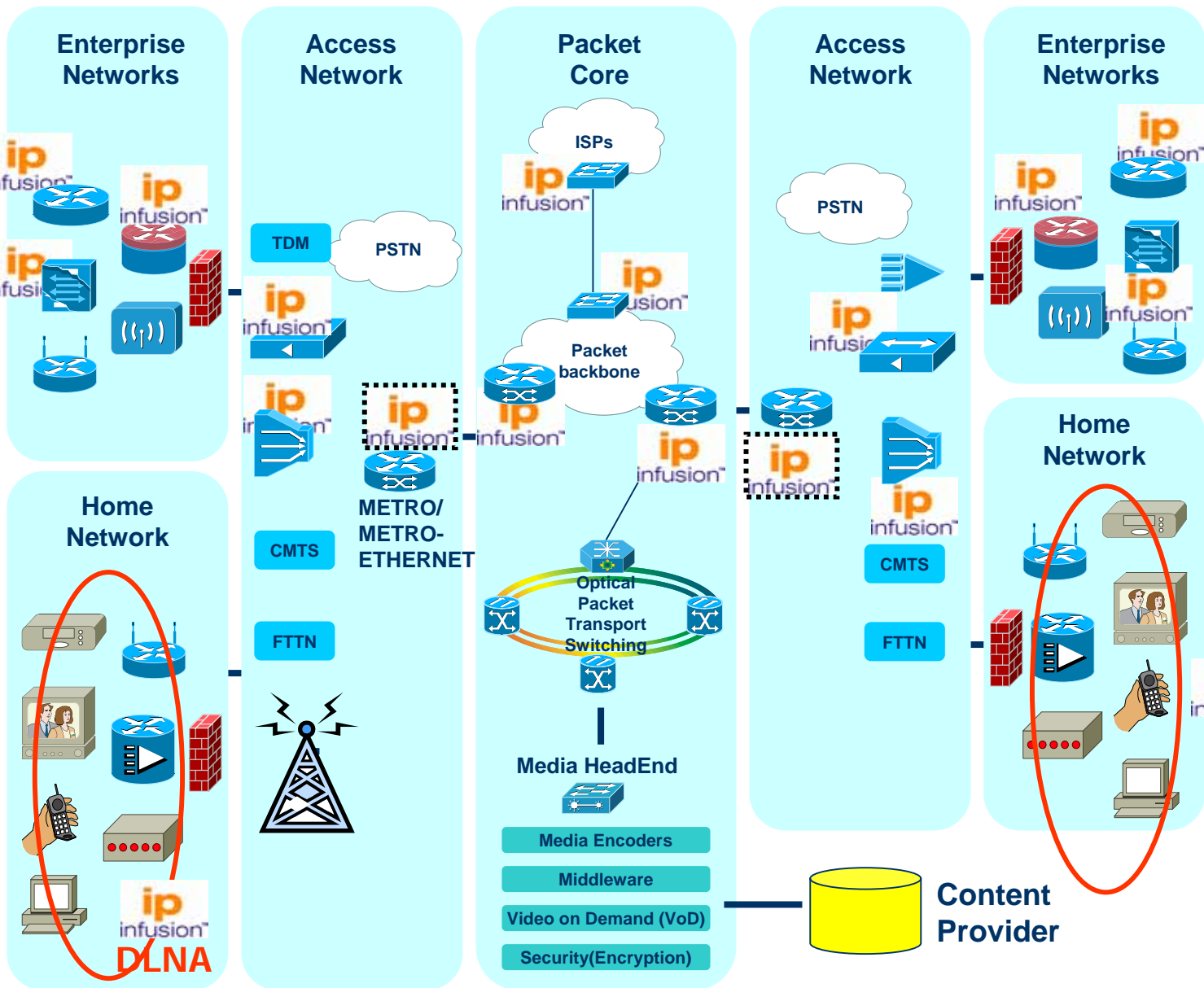


The unification of the Mobile Linux Platform to a certain degree.

ACCESS will lead in various ways, in collaboration with these organizations, the standardization of Linux.

By connecting the **mobile device and the home**, create a seamless personal information space.





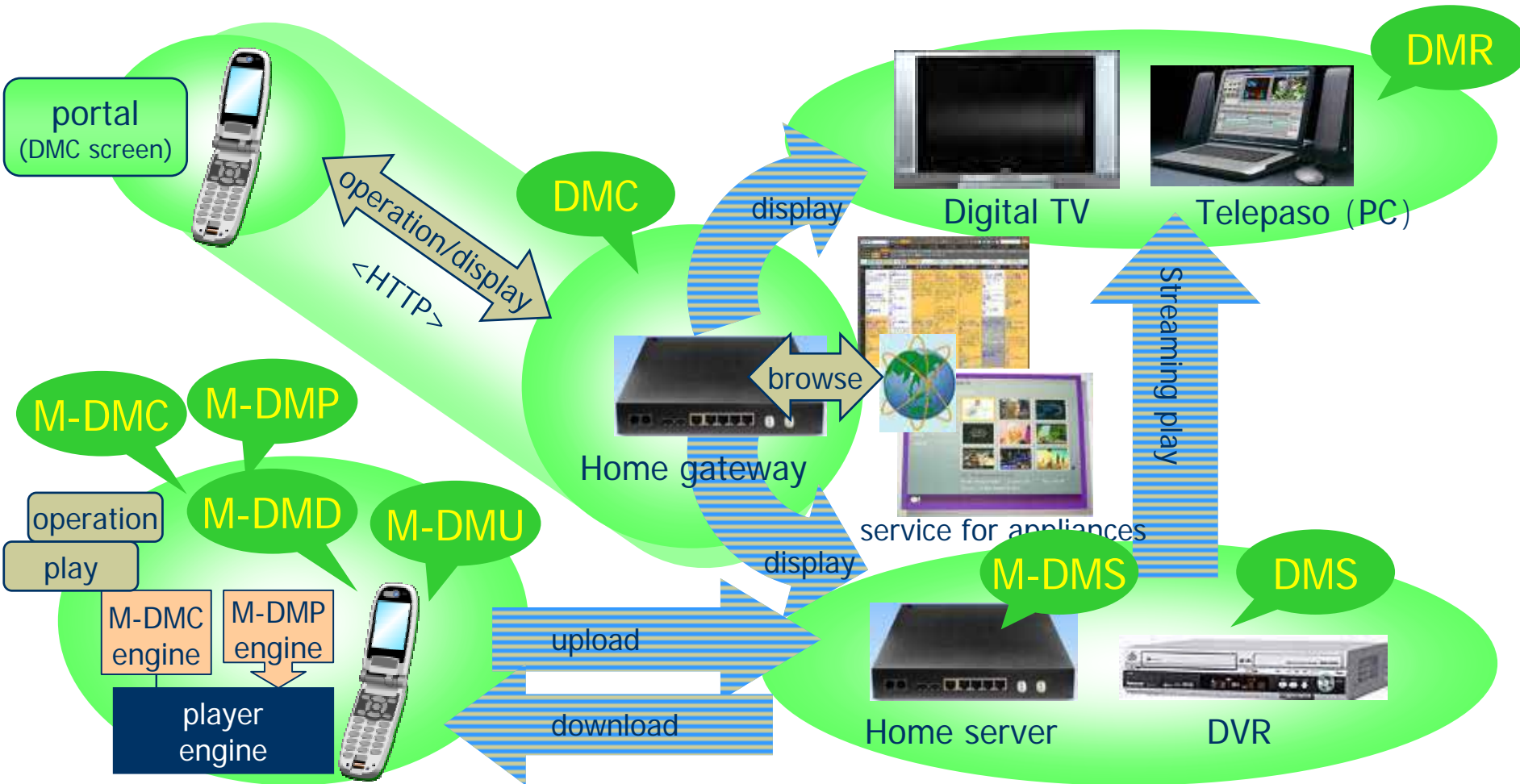
IP Infusion's Network Software

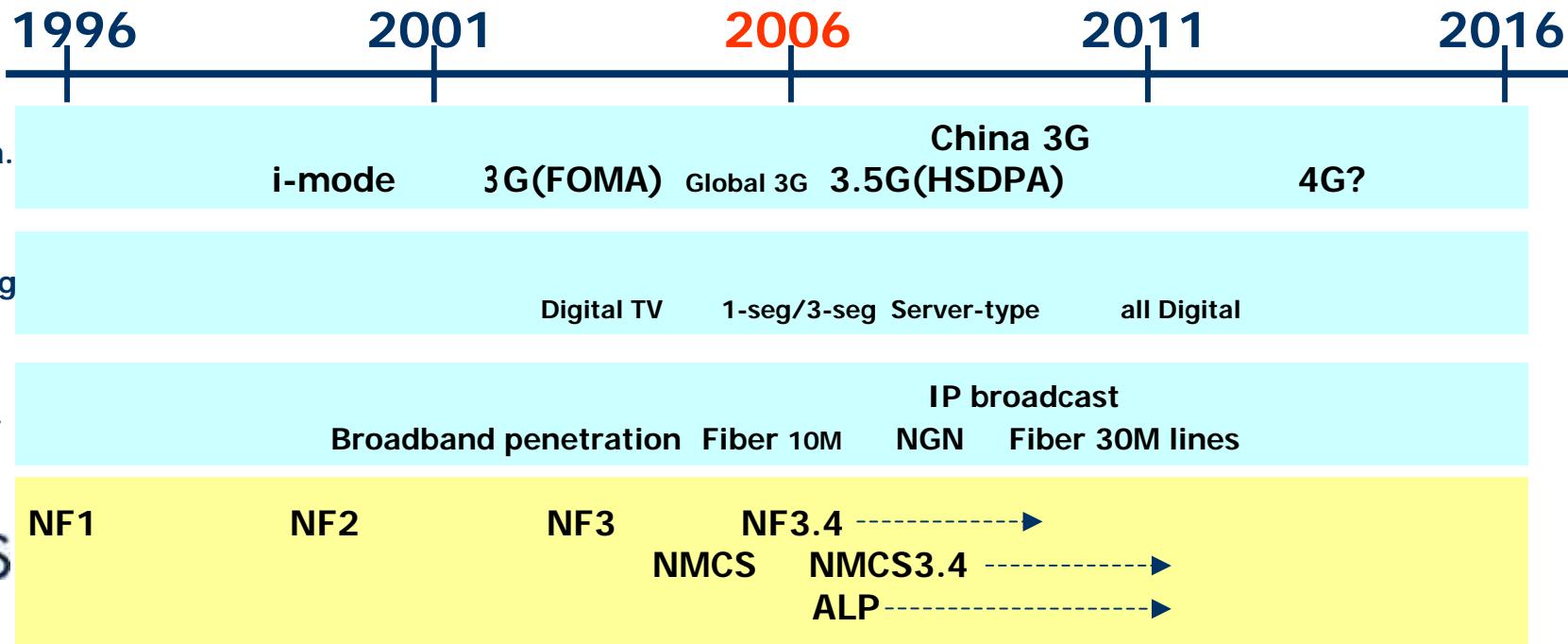
- L2 switching
- L3 routing
- IPv6
- Multicast
- MPLS
- ...

ip infusion DLNA

NetFront Living Connect – DLNA 1.5

DLNA is a protocol to connect home AV equipments, PC's, and mobile devices. Just by connecting to the network (wired/wireless LAN, Bluetooth), the user can enjoy their contents such as photos, music, and videos, wherever it may be.





Mobile and TV's can all be delivered through software

Mobile Total Solution including VoIP

TV Total solution including codecs

Our Role:

Take ahead new advances in Infrastructure and Hardware, and develop advanced technology.

Focus on:
 SIP expansion
 DRM related security
 DLNA 2.0 etc

Unbundled Software and Device
 Dispersed Collaboration Model
 Advanced UI
 new codec
 Mobile Digital Living Improvement etc