



FY2006 Results
and
FY2007 Business Plan

ACCESS Co., Ltd.
Toru Arakawa, President and CEO
March 23, 2007

Disclaimer

- **Targets for operating results and other forward-looking statements contained in this presentation represent management's judgments based on information available at the time this presentation was prepared. Such statements embody a variety of uncertainties**
- **Consequently, actual results may differ from these targets and forecasts. Investors are therefore cautioned not to make investment decisions based solely on these forward-looking statements**

. FY2007 Plan, Issues and Actions

FY2007 Key Points of the Plan



Revenue Target

(Consoli.) 35.4B yen (135.8% YoY)
NRE 17.8B yen (146.7% YoY)
Royalty 17.6B yen (126.3% YoY)

(HQ) 21.7B yen (129.6% YoY)
NRE 11.5B yen (124.3% YoY)
Royalty 10.2B yen (136.2% YoY)

NRE Gross Margin Target

(Consoli.) 47.6% (FY06 29.4%)

(HQ) 48.0% (FY06 32.5%)

R&D

(Consoli.) 7.2B yen (89.8% YoY)

(HQ) 3.5B yen (81.6% YoY)

Complete Integration of ASA (former PSI)

Reduction of 77 personnel from the current 237 (US)

Engineering Shift to China

49% Average annual overseas shift rate on an effort-base

Headcount

(Consoli.) 143 net increase

(HQ) 62 net increase

FY2007 Plan



(M yen)

| | | HQ | | Consolidated | |
|--|-----------------|--------|-------|--------------|--------|
| Revenue Total | | 21,759 | | 35,438 | |
| | NRE | 11,500 | | 17,825 | |
| | Royalty | 10,259 | | 17,613 | |
| Cost of Sale Total | | 7,145 | 32.8% | 10,525 | 29.7% |
| | NRE | 5,178 | 45.0% | 8,545 | 52.4% |
| | Transition Cost | 800 | 7.0% | 800 | |
| | Royalty | 1,167 | 11.4% | 1,179 | 6.7% |
| Gross Margin Total | | 14,614 | 67.2% | 24,913 | 70.3% |
| | NRE | 5,522 | 48.0% | 8,480 | 47.6% |
| | Royalty | 9,092 | 88.6% | 16,433 | 93.3% |
| SG&A Expense Total | | 7,426 | 34.1% | 17,715 | 50.0% |
| | R&D | 3,500 | | 7,225 | |
| | Other | 3,926 | | 10,490 | |
| Operating Profit (non-GAAP) | | 7,187 | 33.0% | 7,198 | 20.3% |
| SG&A Expense (Acquisition related Expense) | | - | | 13,932 | |
| Operating Profit (GAAP) | | 7,187 | 33.0% | 6,734 | -19.0% |
| Ordinary Profit | | 7,187 | 33.0% | 6,351 | -17.9% |
| Extraordinary Expense (Restructuring) | | - | | 501 | |
| Net Income | | 4,262 | 19.6% | 10,132 | -28.6% |

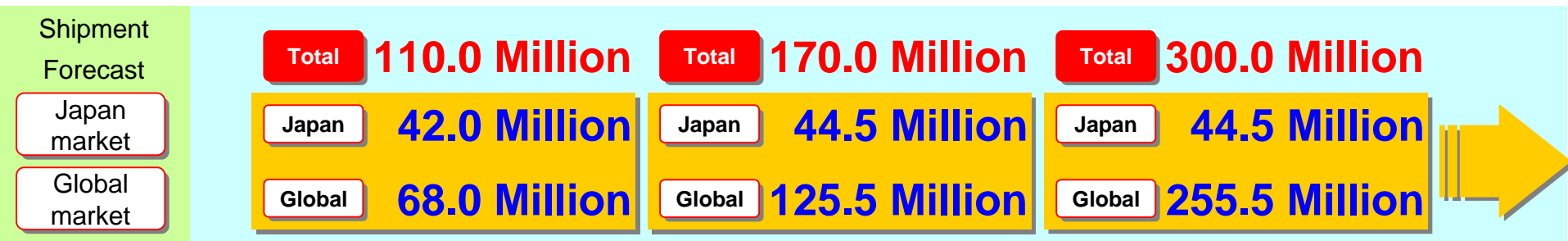
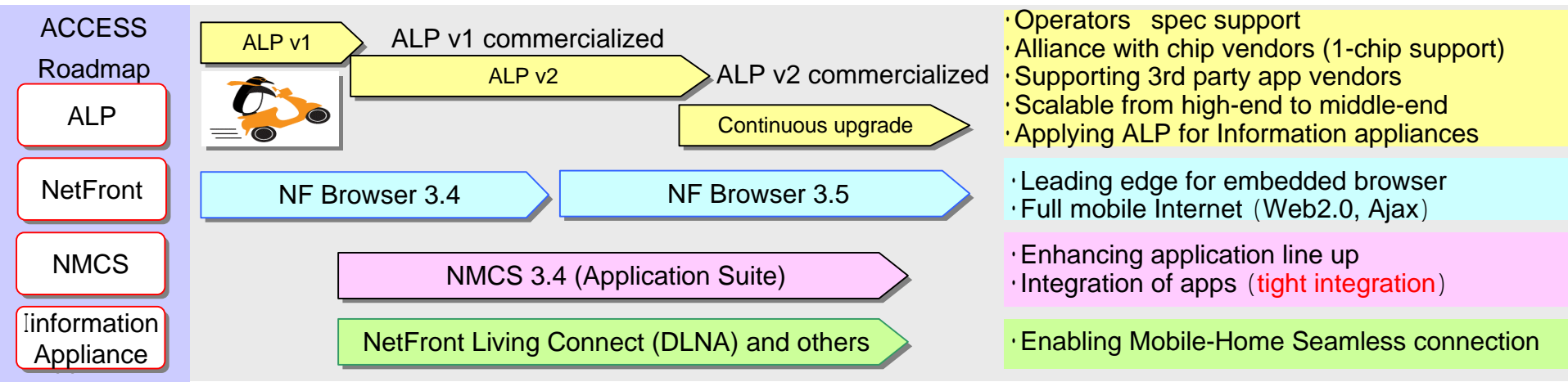
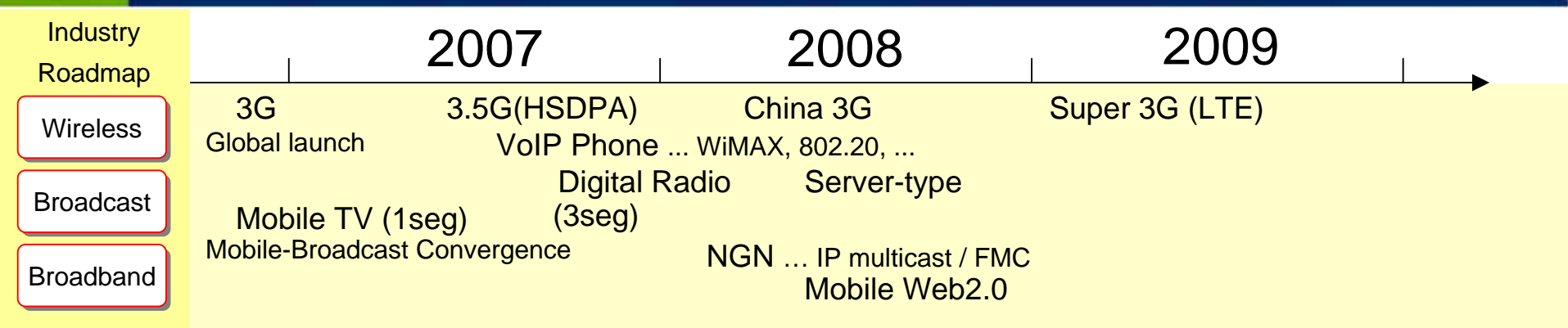
FY2007 Plan – YoY Change



(M yen)

| | | | FY06 | | FY07 | | Change |
|-----------------------------|---------|--|--------|--------|--------|--------|--------|
| Revenue Total | | | 26,102 | 100.0% | 35,438 | 100.0% | 135.8% |
| Core | NRE | | 9,722 | | 13,122 | | 135.0% |
| | Royalty | | 7,894 | | 11,104 | | 140.7% |
| Non-Core | | | 2,548 | | 5,138 | | 201.6% |
| ASA | NRE | | 374 | | 578 | | 154.5% |
| | Royalty | | 5,562 | | 5,496 | | 98.8% |
| Cost of Sales Total | | | 9,078 | 34.8% | 10,525 | 29.7% | 115.9% |
| Core | NRE | | 6,557 | 67.4% | 7,033 | 53.6% | 107.3% |
| | Royalty | | 403 | 5.1% | 1,050 | 9.5% | 260.5% |
| Non-Core | | | 1,414 | 55.5% | 2,155 | 41.9% | 152.4% |
| ASA | NRE | | 597 | 159.6% | 158 | 27.3% | 26.5% |
| | Royalty | | 105 | 1.9% | 129 | 2.3% | 122.9% |
| Gross Margin | | | 17,024 | 65.2% | 24,913 | 70.3% | 146.3% |
| SG&A Expense Total | | | 17,752 | 68.0% | 17,715 | 50.0% | 99.8% |
| Core | R&D | | 8,045 | | 7,225 | | 89.8% |
| | Other | | 7,874 | | 7,804 | | 99.1% |
| Non-Core | | | 1,832 | | 2,686 | | 146.6% |
| Operating Profit (non-GAAP) | | | -727 | -2.8% | 7,198 | 20.3% | - |

Industry Roadmap and ACCESS Forecast



○ R&D

- Revision of Product Strategy
 - Make appropriate strategic investments in FY07 and onwards (ALP, NF, NMCS, IA, DLNA, NGN, Solution)
 - Communicate the Company's management situation to engineers in a timely manner, and make sure each member is conscious of ROI (Return on Investment)
 - Review go-to-market timings. Not too early, but not too late.
 - Review market demand so that products are not over-spec.
 - Be sure to capture customer demands, potential demands
 - Sales, FAE, and Marketing departments to work closely in sync.

○ NRE Engineering (including R&D)

- Improving Engineering Process Efficiency
 - Optimizing Project Management: Qualitative Improvement
 - Coordination/Synchronization with the Business Strategy
 - Clearly define Project Goals at the start
 - Rejuvenate the Management layer
 - Through outsourcing, transition to a properly managed organization
 - Optimizing Work Assignment: Quantitative Improvement
 - Not a partial transfer of work to overseas sites, but transfer of everything, and HQ to focus on the initial set up
 - Reducing Development Cost: Qualitative Improvement
 - Utilizing internal (China) resources. Mainly program
 - Utilizing overseas offshoring (China, Bangladesh) companies. Mainly testing
- Proper Progress Management (Plan/Do/Check/Action)
 - Perform 2-step monthly reviews (New projects)
 - When troubleshooting, making decisions with global optimization in mind

1. ASA (former PSI) Complete Integration

- Re-build the organization (~ April end)
- Reduction of 77 personnel from the current 237 (US)
- Into a R&D center...

Establishment of an Efficient R&D Organization in Japan & US

2. Engineering shift to China (Nanjing/Beijing)

- Transfer of R&D (X) projects (49% annually)
- Transfer of NRE (B/S) projects (50% annually)
- Achieve technical skill proficiency target levels
- Customer information management

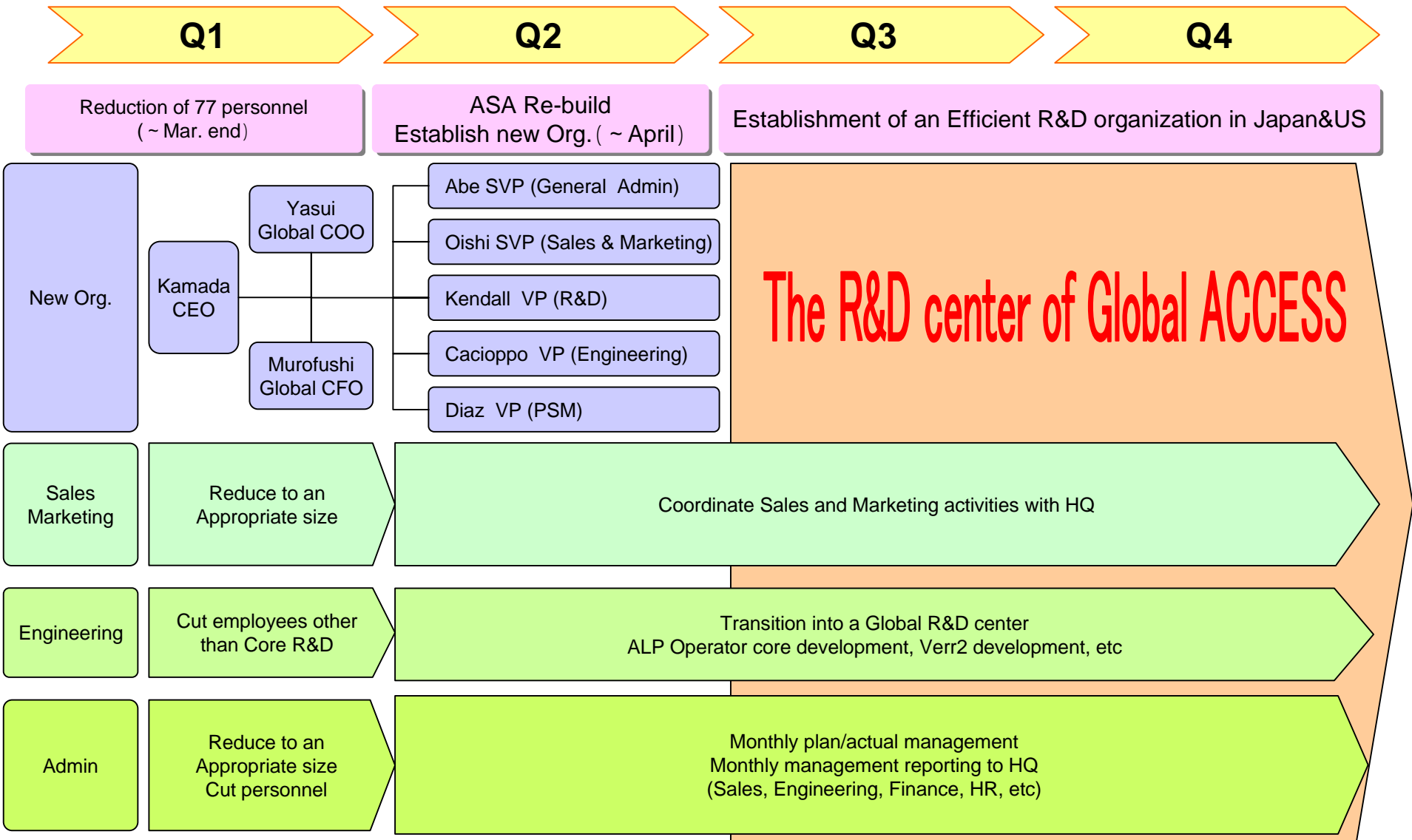
Improvement of Engineering Efficiency in Japan/US/China

3. Sustenance and Improvement at HQ

- Work on 3 fronts: Sales, Engineering and Admin

Building a Global Organization

1. ASA (former PSI) Complete Integration Plan



ASA P/L (FY07 Outlook)

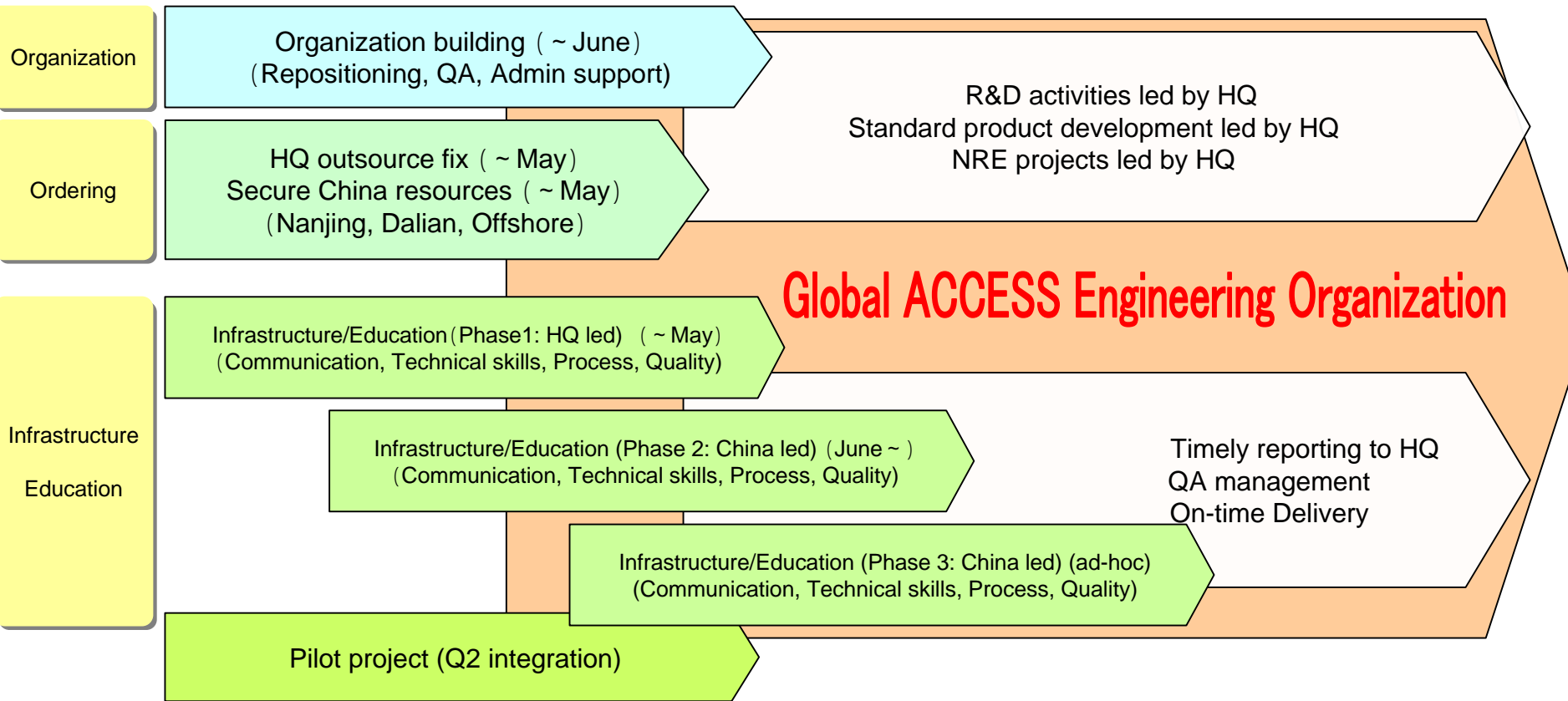


(M yen)

| | | H1 | | H2 | | Full Year | |
|--|-----------------------|-------|-------|-------|-------|-----------|-------|
| Revenue Total | | 3,023 | | 3,051 | | 6,074 | |
| | NRE | 270 | | 307 | | 578 | |
| | Royalty | 2,752 | | 2,743 | | 5,496 | |
| Cost of Sales Total | | 162 | | 125 | | 288 | |
| | NRE | 97 | | 60 | | 158 | |
| | Royalty | 6 | | 6 | | 12 | |
| | Inter-company NRE | - | | - | | - | |
| | Inter-company Royalty | 58 | | 58 | | 117 | |
| Gross Margin Total | | 2,860 | 94.6% | 2,925 | 95.9% | 5,786 | 95.3% |
| | NRE | 173 | 64.1% | 246 | 80.1% | 420 | 72.7% |
| | Royalty | 2,687 | 97.6% | 2,679 | 97.7% | 5,365 | 97.6% |
| SG&A Expense Total | | 3,362 | | 2,976 | | 6,339 | |
| | R&D | 1,810 | | 1,607 | | 3,418 | |
| | Other | 1,552 | | 1,368 | | 2,921 | |
| Operating Profit (non-GAAP) | | 501 | | 50 | | 552 | |
| SG&A Expense (Acquisition related Expense) | | 1,316 | | 1,109 | | 2,425 | |
| Operating Profit (GAAP) | | 1,818 | | 1,160 | | 2,978 | |
| Ordinary Profit | | 1,571 | | 1,001 | | 2,572 | |
| Extraordinary Loss (Restructuring) | | 501 | | - | | 501 | |
| Net Income | | 2,118 | | 1,047 | | 3,166 | |

2. Engineering Shift to China (Nanjing/Beijing)

| Q1 | Q2 | Q3 | Q4 |
|--|---|---|---|
| Overseas Shift rate 35% (Nanjing) Engineers 262 (Beijing) Engineers 71 (Offshore) Engineers 60 | Overseas Shift rate 53.3% (Nanjing) Engineers 330 (Beijing) Engineers 71 (Offshore) Engineers 132 | Overseas Shift rate 54.9% (Nanjing) Engineers 330 (Beijing) Engineers 71 (Offshore) Engineers 162 | Overseas Shift rate 54.9% (Nanjing) Engineers 330 (Beijing) Engineers 71 (Offshore) Engineers 162 |



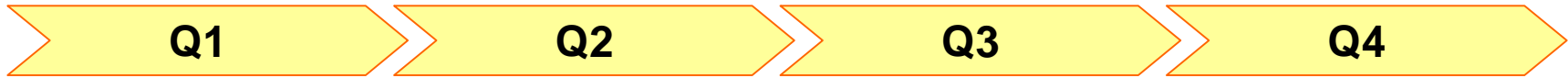
ASC P/L (FY07 Outlook)



(M yen)

| | | H1 | | H2 | | Full Year | |
|--|-----------------------|-----|-------|-------|-------|-----------|-------|
| Revenue Total | | 943 | | 1,451 | | 2,395 | |
| | NRE | 82 | | 35 | | 118 | |
| | Royalty | 169 | | 242 | | 412 | |
| | Inter-company NRE | 691 | | 1,172 | | 1,864 | |
| Cost of Sales Total | | 653 | | 950 | | 1,603 | |
| | NRE | 585 | | 852 | | 1,437 | |
| | Royalty | - | | - | | - | |
| | Inter-company NRE | - | | - | | - | |
| | Inter-company Royalty | 67 | | 97 | | 165 | |
| Gross Margin Total | | 290 | 30.8% | 501 | 34.5% | 792 | 33.1% |
| | NRE | 189 | 24.5% | 355 | 29.4% | 544 | 27.4% |
| | Royalty | 101 | 59.8% | 145 | 59.9% | 247 | 60.0% |
| SG&A Expense Total | | 500 | | 542 | | 1,042 | |
| | R&D | 173 | | - | | 173 | |
| | Other | 327 | | 542 | | 868 | |
| Operating Profit (non-GAAP) | | 209 | | 41 | | 250 | |
| SG&A Expense (Acquisition related Expense) | | 14 | | 10 | | 24 | |
| Operating Profit (GAAP) | | 223 | | 51 | | 275 | |
| Ordinary Profit | | 221 | | 47 | | 268 | |
| Extraordinary Loss (Restructuring) | | - | | - | | - | |
| Net Income | | 221 | | 47 | | 268 | |

3. Sustenance and Improvement at HQ

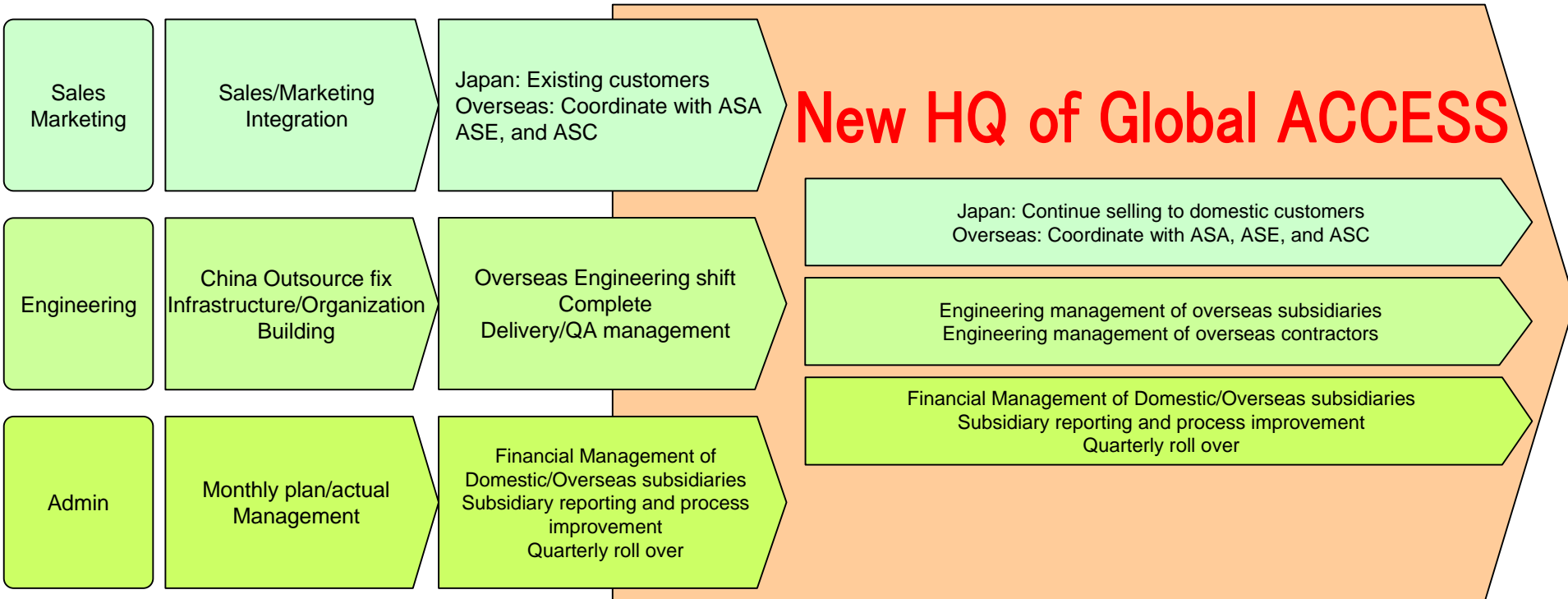


Q1
 ASA Integration (Yasui)
 IPI Integration (Narasaki)
 China shift preparation (Watanabe/Uematsu)
 Subsidiary Management (Murofushi/Abe)
 HQ Engineering Improvement (Watanabe/Fueki)

Q2
 China shift complete (Watanabe/Uematsu)
 Engineering Efficiency Improvement (Watanabe/Uematsu)
 Financial Management (Murofushi)
 Quarterly Financial Review (Murofushi)
 HQ Engineering Improvement (Watanabe/Fueki)

Q3
 China Engineering Improvement (Watanabe/Uematsu)
 Quarterly Financial Review (Murofushi)
 HQ Engineering Improvement (Watanabe/Fueki)

Q4
 China Engineering Improvement (Watanabe/Uematsu)
 Quarterly Financial Review (Murofushi)
 HQ Engineering Improvement (Watanabe/Fueki)



HQ P/L (FY07 Outlook)



(M yen)

| | | H1 | | H2 | | Full Year | |
|--|-----------------------|-------|-------|--------|-------|-----------|-------|
| Revenue Total | | 6,365 | | 15,394 | | 21,759 | |
| | NRE | 3,185 | | 8,315 | | 11,500 | |
| | Royalty | 2,815 | | 6,685 | | 9,500 | |
| | Inter-company Royalty | 365 | | 394 | | 759 | |
| Cost of Sales Total | | 2,354 | | 4,790 | | 7,145 | |
| | NRE | 1,126 | | 2,525 | | 3,651 | |
| | Royalty | 361 | | 805 | | 1,167 | |
| | Inter-company NRE | 866 | | 1,459 | | 2,326 | |
| Gross Margin Total | | 4,010 | 63.0% | 10,603 | 68.9% | 14,614 | 67.2% |
| | NRE | 1,192 | 37.4% | 4,330 | 52.1% | 5,522 | 48.0% |
| | Royalty | 2,818 | 88.6% | 6,273 | 88.6% | 9,092 | 88.6% |
| SG&A Expense Total | | 3,991 | | 3,435 | | 7,426 | |
| | R&D | 1,992 | | 1,507 | | 3,500 | |
| | Other | 1,999 | | 1,928 | | 3,926 | |
| Operating Profit (non-GAAP) | | 19 | | 7,167 | | 7,187 | |
| SG&A Expense (Acquisition related Expense) | | - | | - | | - | |
| Operating Profit (GAAP) | | 19 | | 7,167 | | 7,187 | |
| Ordinary Profit | | 19 | | 7,167 | | 7,187 | |
| Extraordinary Loss (Restructuring) | | - | | - | | - | |
| Net Income | | 11 | | 4,250 | | 4,262 | |

FY07 Headcount Plan (Core Engineers B/S/X Projects)



Core Engineers by Company B/S/X Projects

Headcount Plan by Quarter

(unit: person)

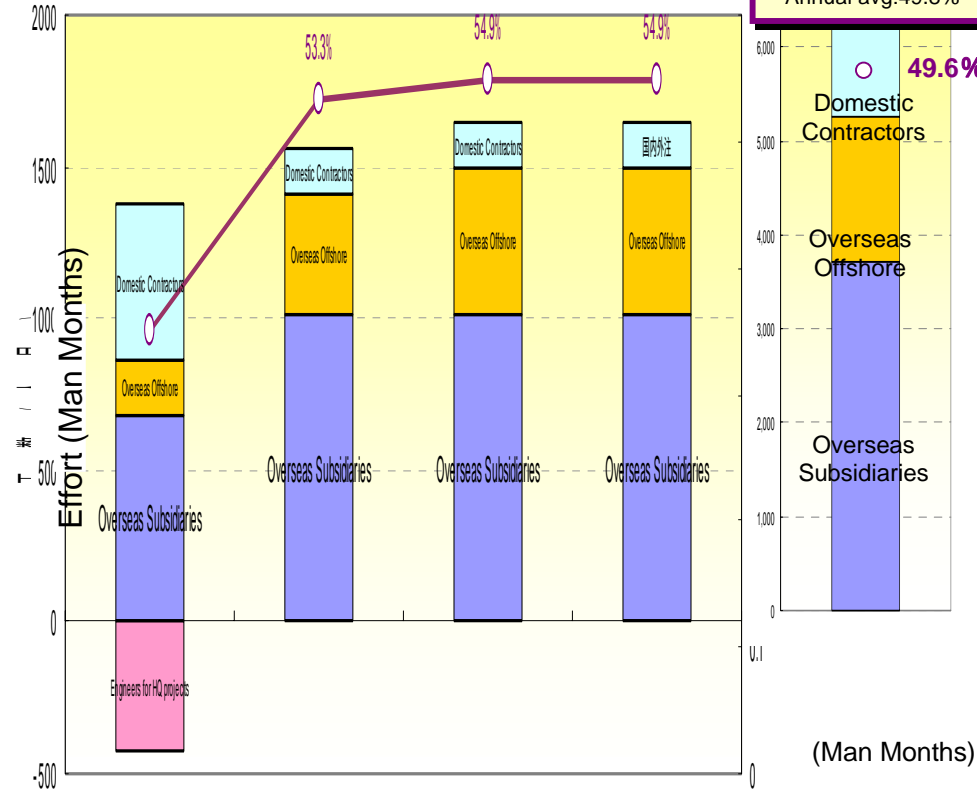
| | FY07 Start | FY07 Q1 | FY07 Q2 | FY07 Q3 | FY07 Q4 | Net Increase |
|----------------------|-------------|-------------|-------------|-------------|-------------|--------------|
| HQ | 340 | 385 | 390 | 390 | 390 | 50 |
| ASC(N) | 262 | 262 | 330 | 330 | 330 | 68 |
| ASC(B) | 71 | 71 | 71 | 71 | 71 | 0 |
| AS | 73 | 73 | 93 | 93 | 93 | 20 |
| ASE | 53 | 57 | 63 | 68 | 68 | 15 |
| AH | 18 | 18 | 18 | 18 | 18 | 0 |
| ASA | 214 | 161 | 161 | 161 | 161 | -53 |
| Core Subtotal | 1031 | 1027 | 1126 | 1131 | 1131 | 100 |

Note

HQ = Headquarters
 ASC(N) = ACCESS China subsidiary (Nanjing)
 ASC(B) = ACCESS China subsidiary (Beijing)
 AS = ACCESS Korea subsidiary (Seoul)
 ASE = ACCESS Europe subsidiary (Germany)
 AH = ACCESS Hokkaido
 ASA = ACCESS US subsidiary (Sunnyvale) (incl. France)

| Q1 | Q2 | Q3 | Q4 | Total |
|------------------|------------------|------------------|------------------|-----------|
| 2,461 man-months | 2,641 man-months | 2,731 man-months | 2,731 man-months | 10,564 mm |

Overseas transition rate
Annual avg: 49.8%



| (Man Months) | FY07 Q1 | FY07 Q2 | FY07 Q3 | FY07 Q4 | FY07 Total |
|-----------------------------|--------------|--------------|--------------|--------------|---------------|
| Overseas Subsidiaries | 682 | 1,012 | 1,012 | 1,012 | 3,718 |
| Overseas Offshore | 180 | 396 | 486 | 486 | 1,548 |
| Domestic | 1,083 | 1,083 | 1,083 | 1,083 | 4,332 |
| Domestic Contractors | 516 | 150 | 150 | 150 | 966 |
| Engineers for HQ project | -429 | | | | |
| Overseas transition rate | 35.0% | 53.3% | 54.9% | 54.9% | 49.8% |
| B/S/X projects Total | 2,461 | 2,641 | 2,731 | 2,731 | 10,564 |

FY07 Headcount Plan (All Group Employees)



FY2007 All Employees

(unit: person)

| Core | FY07 Start | FY07 Q1 | FY07 Q2 | FY07 Q3 | FY07 Q4 | Net Increase |
|-----------------------------|--------------|--------------|--------------|--------------|--------------|--------------|
| HQ | 483 | 544 | 545 | 545 | 545 | 62 |
| ASC(N) | 292 | 294 | 362 | 362 | 362 | 70 |
| ASC(B) | 105 | 106 | 106 | 106 | 106 | 1 |
| AS | 81 | 81 | 101 | 101 | 101 | 20 |
| ASE | 69 | 74 | 86 | 93 | 93 | 24 |
| AH | 20 | 20 | 20 | 20 | 20 | 0 |
| ASA | 291 | 291 | 214 | 214 | 214 | -77 |
| Core Subtotal | 1,341 | 1,410 | 1,434 | 1,441 | 1,441 | 100 |
| Non-Core | FY07 Start | FY07 Q1 | FY07 Q2 | FY07 Q3 | FY07 Q4 | Net Increase |
| IPI | 38 | 34 | 29 | 29 | 29 | -9 |
| CV | 59 | 59 | 61 | 61 | 61 | 2 |
| RZ | 30 | 34 | 41 | 45 | 48 | 18 |
| AMS | 39 | 44 | 53 | 54 | 54 | 15 |
| AP | 33 | 37 | 42 | 50 | 50 | 17 |
| Non-Core Subtotal | 199 | 208 | 226 | 239 | 242 | 43 |
| Core, Non-Core Total | 1,540 | 1,618 | 1,660 | 1,680 | 1,683 | 143 |

Note

| | | |
|--------------------------------------|---|-------------------------------------|
| HQ = ACCESS | ASE = ACCESS Europe Sub. (Germany) | CV = C Valley (China) |
| ASC(N) = ACCESS China Sub. (Nanjing) | AH = ACCESS Hokkaido | RZ = RedZero (China) |
| ASC(B) = ACCESS China Sub. (Beijing) | ASA = ACCESS US Sub. (Sunnyvale) (incl. France) | AMS = ACCESS Media Solution (China) |
| AS = ACCESS Korea Sub. (Seoul) | IPI = IP Infusion (San Jose, US) | AP = ACCESS Publishing (Tokyo) |

FY07 New ACCESS Group Management



ACCESS HQ

Arakawa CEO

Kamada CTO

Yasui Global COO

Murofushi Global CFO

Abe Exec. Officer (CP/Finance, HR/GA/Legal)

Oishi Exec. Officer (Marketing)

Watanabe Exec. Officer (PSM)

Uematsu Exec. Officer (PD)

Narasaki Exec. Officer (IPI)

Zhang Exec. Officer (China Operations)

Aoyama VP
(Sales)

Fueki SVP
(PPM: main)
(PD: sub)

ACCESS Systems Americas

Kamada CEO

Yasui Global COO

Murofushi Global CFO

Abe SVP (General Admin)

Oishi SVP (Sales & Marketing)

Kendall VP (R&D)

Cacioppo VP (Engineering)

Diaz VP (PSM)

ACCESS China

Suhandinata CEO

Uematsu Exec. Officer
(China Engineering setup)

Zhang Exec. Officer (China Operations)

FY2007 Consolidated Plan



(M yen)

| | ACCESS HQ | ASA | ASE | ASC | AS | AH | Core Elimination | Core Total | Non-Core Elimination | Non-Core Total | Grand Total |
|--|-----------------------|--------|-------|-------|-------|-----|------------------|------------|----------------------|----------------|-------------|
| Revenue Total | 21,759 | 6,074 | 2,761 | 2,395 | 976 | 241 | 3,908 | 30,300 | - | 5,138 | 35,438 |
| | NRE | 11,500 | 578 | 1,502 | 118 | - | - | 13,700 | - | 4,125 | 17,825 |
| | Royalty | 9,500 | 5,496 | 1,191 | 412 | - | - | 16,600 | - | 1,013 | 17,613 |
| | Inter-company NRE | - | - | 66 | 1,864 | 976 | 241 | 3,149 | - | - | - |
| | Inter-company Royalty | 759 | - | - | - | - | - | 759 | - | - | - |
| Cost of Sales Total | 7,145 | 288 | 1,373 | 1,603 | 843 | 201 | 3,085 | 8,370 | - | 2,155 | 10,525 |
| | NRE | 2,851 | 158 | 897 | 1,437 | 843 | 201 | 6,390 | - | 2,155 | 8,545 |
| | Royalty | 1,167 | 12 | - | - | - | - | 1,179 | - | - | 1,179 |
| | Inter-company NRE | 2,326 | - | - | - | - | - | 2,326 | - | - | - |
| | Inter-company Royalty | - | 117 | 476 | 165 | - | - | 759 | - | - | - |
| | Transition Cost | 800 | - | - | - | - | - | 800 | - | - | 800 |
| Gross Margin Total | 14,614 | 5,786 | 1,387 | 792 | 132 | 40 | 823 | 21,930 | - | 2,983 | 24,913 |
| | NRE | 5,522 | 420 | 672 | 544 | 132 | 40 | 823 | - | 1,970 | 8,480 |
| | Royalty | 9,092 | 5,365 | 715 | 247 | - | - | 15,420 | - | 1,013 | 16,433 |
| SG&A Expense | 7,426 | 6,339 | 1,025 | 1,042 | 140 | 34 | 980 | 15,029 | - | 2,686 | 17,715 |
| Operating Profit (non-GAAP) | 7,187 | 552 | 362 | 250 | 8 | 5 | 157 | 6,900 | - | 297 | 7,198 |
| SG&A Expense (Acquisition related Expense) | - | 2,425 | - | 24 | - | - | 10,086 | 12,536 | 1,025 | 1,395 | 13,932 |
| Operating Profit (GAAP) | 7,187 | 2,978 | 362 | 275 | 8 | 5 | 9,929 | 5,636 | 1,025 | 1,098 | 6,734 |
| Ordinary Profit | 7,187 | 2,572 | 519 | 268 | 8 | 6 | 10,086 | 5,206 | 1,025 | 1,145 | 6,351 |
| Extraordinary Loss (Restructuring) | - | 501 | - | - | - | - | - | 501 | - | - | 501 |
| Net Income | 4,262 | 3,166 | 377 | 268 | 8 | 2 | 10,086 | 8,870 | 1,025 | 1,262 | 10,132 |

FY07 Consolidated Plan (1st / 2nd Half)



(M yen)

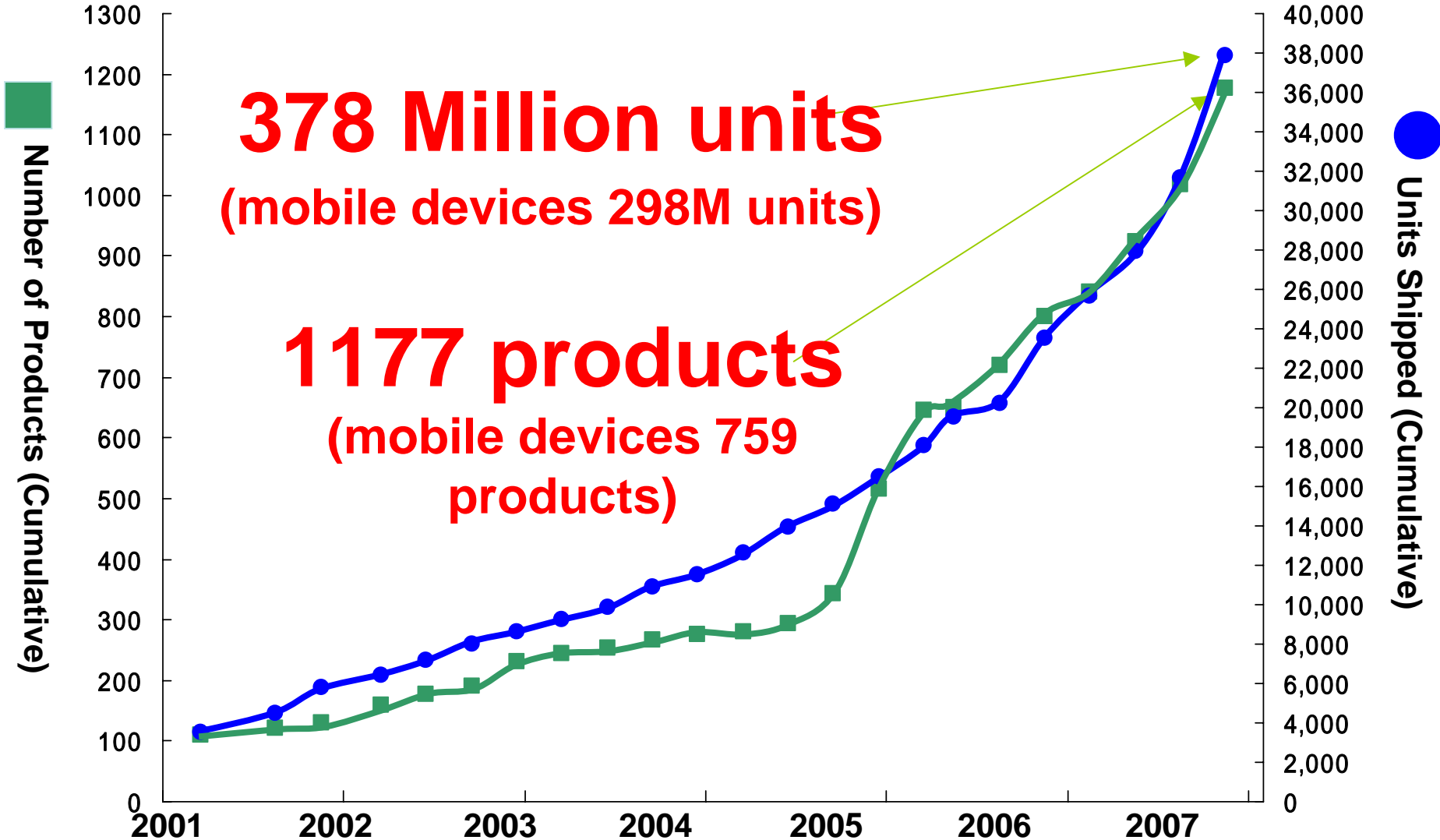
| | | H1 | | H2 | | Full Year | |
|--|---------|--------|-------|--------|-------|-----------|-------|
| Revenue Total | | 12,369 | | 23,069 | | 35,438 | |
| | NRE | 5,650 | | 12,175 | | 17,825 | |
| | Royalty | 6,719 | | 10,893 | | 17,613 | |
| Cost of Sales Total | | 3,949 | | 6,575 | | 10,525 | |
| | NRE | 3,581 | | 5,763 | | 9,345 | |
| | Royalty | 368 | | 811 | | 1,179 | |
| Gross Margin Total | | 8,420 | 68.1% | 16,493 | 71.5% | 24,913 | 70.3% |
| | NRE | 2,068 | 36.6% | 6,411 | 52.7% | 8,480 | 47.6% |
| | Royalty | 6,351 | 94.5% | 10,081 | 92.5% | 16,433 | 93.3% |
| SG&A Expense | | 9,206 | | 8,509 | | 17,715 | |
| Operating Profit (non - GAAP) | | 786 | | 7,984 | | 7,198 | |
| SG&A Expense (Acquisition related Expense) | | 7,071 | | 6,861 | | 13,932 | |
| Operating Profit (GAAP) | | 7,857 | | 1,123 | | 6,734 | |
| Ordinary Profit | | 7,623 | | 1,271 | | 6,351 | |
| Extraordinary Loss (Restructuring) | | 501 | | - | | 501 | |
| Net Income | | 8,247 | | 1,885 | | 10,132 | |

. Appendix: Results from Existing Business

Cumulative Units Shipped – over 378M unit

(2007年2月末)

(10,000 units)



High-end products from all Domestic Operators 2007 Spring models



New products in the 2007 Spring models



SoftBank 8125H

SoftBank 911T
ワンセグ・Music and more...
あらゆる最新機能を搭載した17.9mm薄型ハイスペックモデル

- ワンセグを標準に搭載できる「ワンセグワイプ」(PVR機能)
- 100万画素カメラとLEDライト
- 17.9mm薄型ハイスペックモデル
- 20万画素ビデオカメラ、30万画素カメラ、30万画素カメラ
- GPS機能、3.2メガピクセルAFカメラ、おサイフケータイ対応

20 Colors

Collaboration with PANTONE®

Globally expanding business

Samsung NetFront browser products



Globally expanding business

Sony Ericsson NetFront browser products



• Walkman™ music phones

(Walkman® player, Multimedia software, 2 MP camera)

- **W200i** Triband (announced)
- **W300i/c** Triband Q2/06
- **W550i/c** Triband Q4/05
- **W600i/c** Quadband+Edge Q4/05
- **W610i/c** Triband+Edge (announced)
- **W710i/c** Quadband+Edge Q3/06
- **W810i/c** Quadband+Edge Q1/06
- **W830i/c** Triband+UMTS Q3/06
- **W850i** Triband+UMTS Q3/06
- **W880i/W888c** Triband+UMTS (announced)
- **W900i/c** Triband+UMTS Q4/05



• Cyber-Shot™ imaging phones

(3.2 MP camera, xenon flash, image stabilizer, QVGA screen)

- **K790a/i/c/K800i**
K790a, K790i, K790c: Triband+EDGE Q2/06
K800i: Triband+UMTS Q2/06



• Feature phones

- **K310i/a/c** Triband Q2/06
- **K320i** Triband Q4/06
- **K510i/a/c** Triband Q2/06
- **K550i/c** Quadband+EDGE (announced)
- **K550im** Triband+EDGE **i-mode™** (announced)
- **K610i** Triband+UMTS Q2/06
- **K610im** Triband+UMTS **i-mode™** Q3/06
- **K618i** Triband+UMTS Q3/06
- **K810i/K818c** Triband+UMTS (announced)
- **V630i** Triband+UMTS Q2/06
- **Z310i/a** Triband (announced)
- **Z530i/c** Triband Q2/06
- **Z550i/a/c** Triband Q3/06
- **Z558i/c** Triband Q4/06
- **Z610i** Triband
- **Z710i/c** Quadband+Edge Q3/06



Challenging new areas toward the goal “NetFront on all devices”

IP Phones



NTT East/West

1seg for PCs



I-O Data

Scanners



Canon

Digital TV



Sharp

Mobile Printers



Brother Industry

NetFront v3.3 for PocketPC with JV-Lite^(R)2 receives Smartphone & Pocket PC Magazine s "Best Software Awards 2006"

