



**FY2008 Results
and
FY2009 Business Plan**

**ACCESS CO., LTD.
President & Co-CEO
Tomihisa Kamada
March 25th, 2009**

Disclaimer

- **Targets for operating results and other forward-looking statements contained in this presentation represent management's judgments based on information available at the time this presentation was prepared. Such statements embody a variety of uncertainties.**
- **Consequently, actual results may differ from these targets and forecasts. Investors are therefore cautioned not to make investment decisions based solely on these forward-looking statements.**

Strengthening of Management Structure (Starting Feb. 1, 2009)



- Adoption of two Representative Directors to strengthen the management structure for agile development of the global business

Headquarters

- Toru Arakawa
CEO and Member of the Board (Representative Director)
(expected to assume the office of Chairman subject to approval at Annual General Shareholders' Meeting in Apr.)
- Tomihisa Kamada
President, Co-CEO, and Member of the Board (Representative Director)
- Toshiya Yasui
Executive Vice President, Director of the Board, and COO
- Nobuya Murofushi
Senior Executive Officer, Director of the Board, and CFO
- Pierre Suhandinata
Director of the Board
- Koichi Narasaki
Senior Executive Officer, CSO, ACCESS CO, LTD.
CEO, IP Infusion Inc.
- Kunihiro Ishiguro
Senior Executive Officer, CTO, and CIO, ACCESS CO., LTD.
CTO, IP Infusion Inc.
- Kiyoyasu Oishi
Executive Officer, SVP of Marketing, ACCESS CO, LTD.
CEO, ACCESS Systems Americas, Inc.
- Junichiro Matsumoto
Executive Officer and VP, President's Office & Internal Auditor's Office

Regional Offices

- Kiyoyasu Oishi
CEO, ACCESS Systems Americas, Inc
- Yusuke Kanda
CEO, ACCESS Systems Europe Holdings B.V.
- Pierre Suhandinata
CEO, ACCESS China Inc.
- Makoto Tanaka
CEO, ACCESS Seoul Co., Ltd.

FY2008 Overview




Profitability achieved

Development of ACCESS Linux Platform™ (ALP) Project is progressing smoothly for completion in FY2009

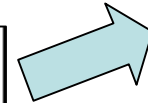
FY2008 target (source: FY2008 presentation)

Our Goals for FY2008



- **Medium-Term**
Shift into the platform business from the browser business
- **FY2008 and FY2009**
Completion of the ALP project
- **FY2008 target figures**
 - ✓ Consolidated ordinary profit: 1.1 billion yen
 - ✓ Consolidated net profit: 700 million yenFurther improve the management system and development efficiency (continued from FY2007)

© 2008 ACCESS CO., LTD. All rights reserved.



Platform business accounting for a larger percentage, will reach **approximately 30% of sales**



Development of operator pack projects for NTT DOCOMO progressing smoothly
Jan. 09 Development of Base Software completed
Commercial software under development



Profitability achieved by strengthened management structure and improved development efficiency
Consolidated ordinary profit
2.11 bil yen
Consolidated net profit: **830 mil yen**

Management Policy for FY2009



○ Medium/Long Term

Shift from browser business into platform business
High-profit structure for the next growth stage

○ FY2009

Completion of the ALP project
Leading ALP business into a growth phase

○ FY2009

Profit increase: consolidated ordinary profit:	3 bil yen
consolidated net profit:	1.8 bil yen

Further improve the management structure and development efficiency (continued from FY2008)

FY2009 Budget

from Feb.1, 2009 to Jan 31, 2010



Consolidated

(JPY in million)

	1 st half	2 nd half	FY2009 (E)	FY2008	variance
Net Sales	6,927	23,546	30,473	31,156	-683
Operating Profit	-3,635	6,892	3,256	3,232	24
Ordinary Profit	-3,559	6,559	3,000	2,138	862
Net Income	-2,027	3,916	1,889	840	1,049

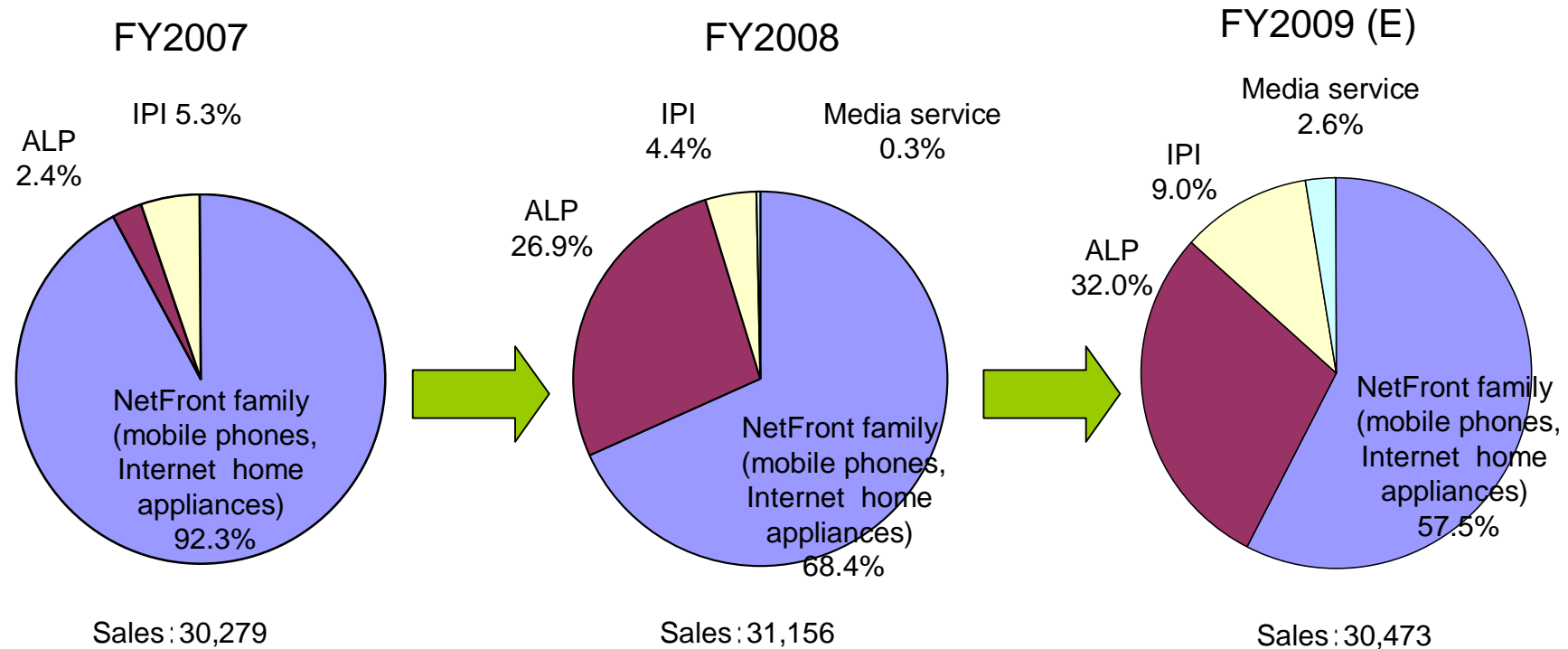
Non-consolidated

	1 st half	2 nd half	FY2009 (E)	FY2008	variance
Net Sales	4,706	20,794	25,500	27,595	-2,095
Operating Profit	-3,354	6,090	2,736	3,929	-1,193
Ordinary Profit	-3,353	5,691	2,337	3,547	-1,210
Net Income	-1,810	3,073	1,262	919	343

Consolidated Sales by Product Unit



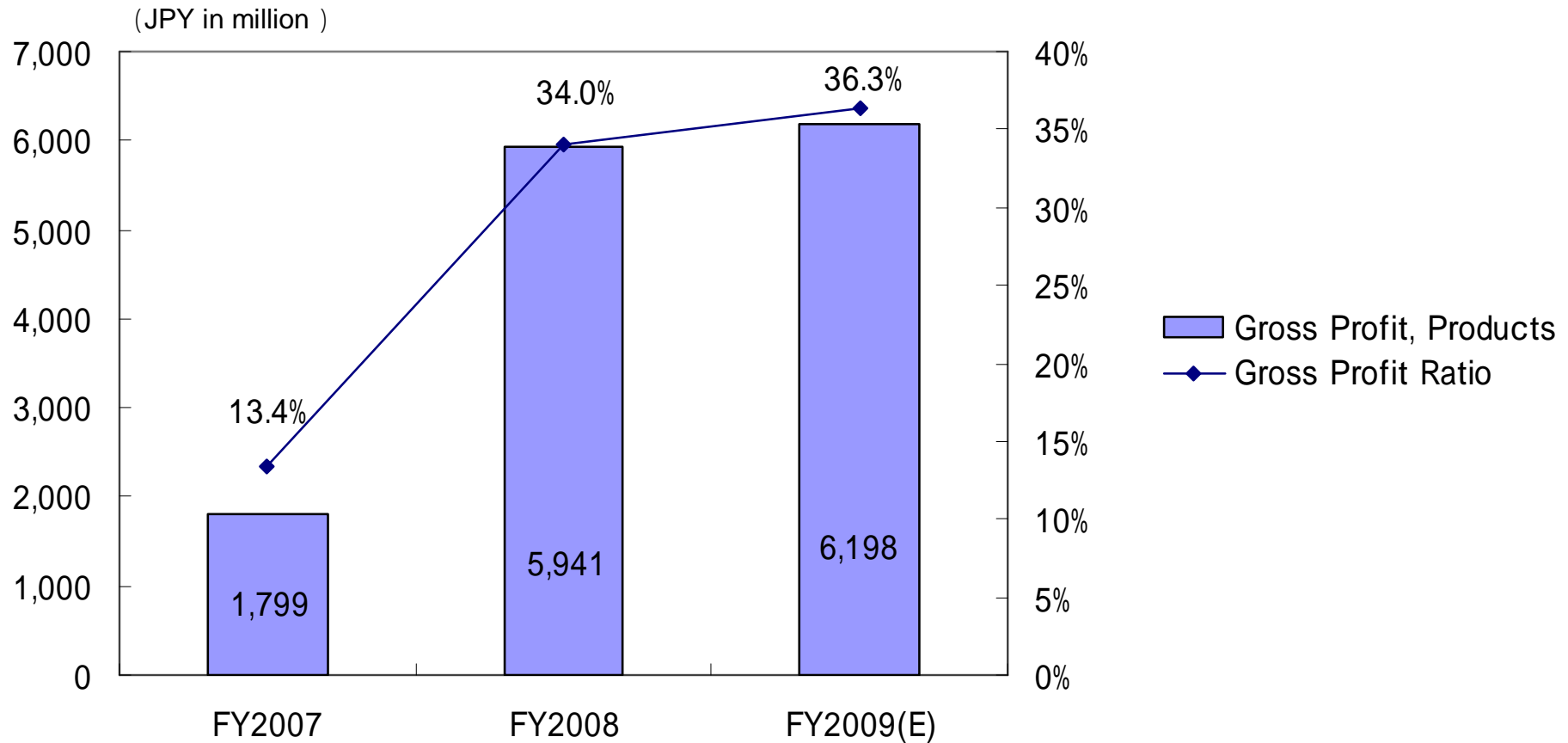
- Major 4 product units:
ALP, NetFront™ family, IPI, Media service business



(JPY in millions)

Plans to be more profitable - 1

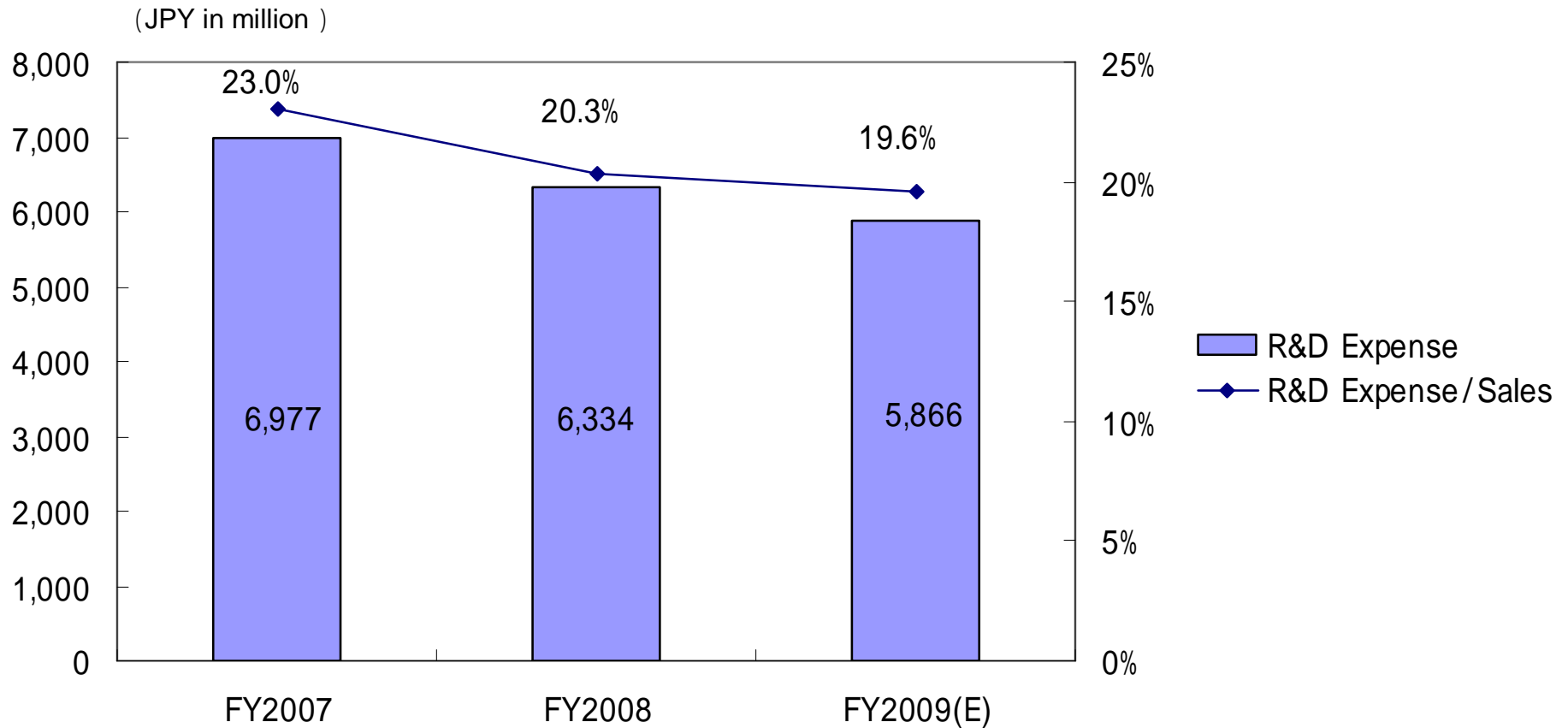
○ Increase gross profit ratio



Plans to be more profitable - 2



○ Reduce R&D Expense



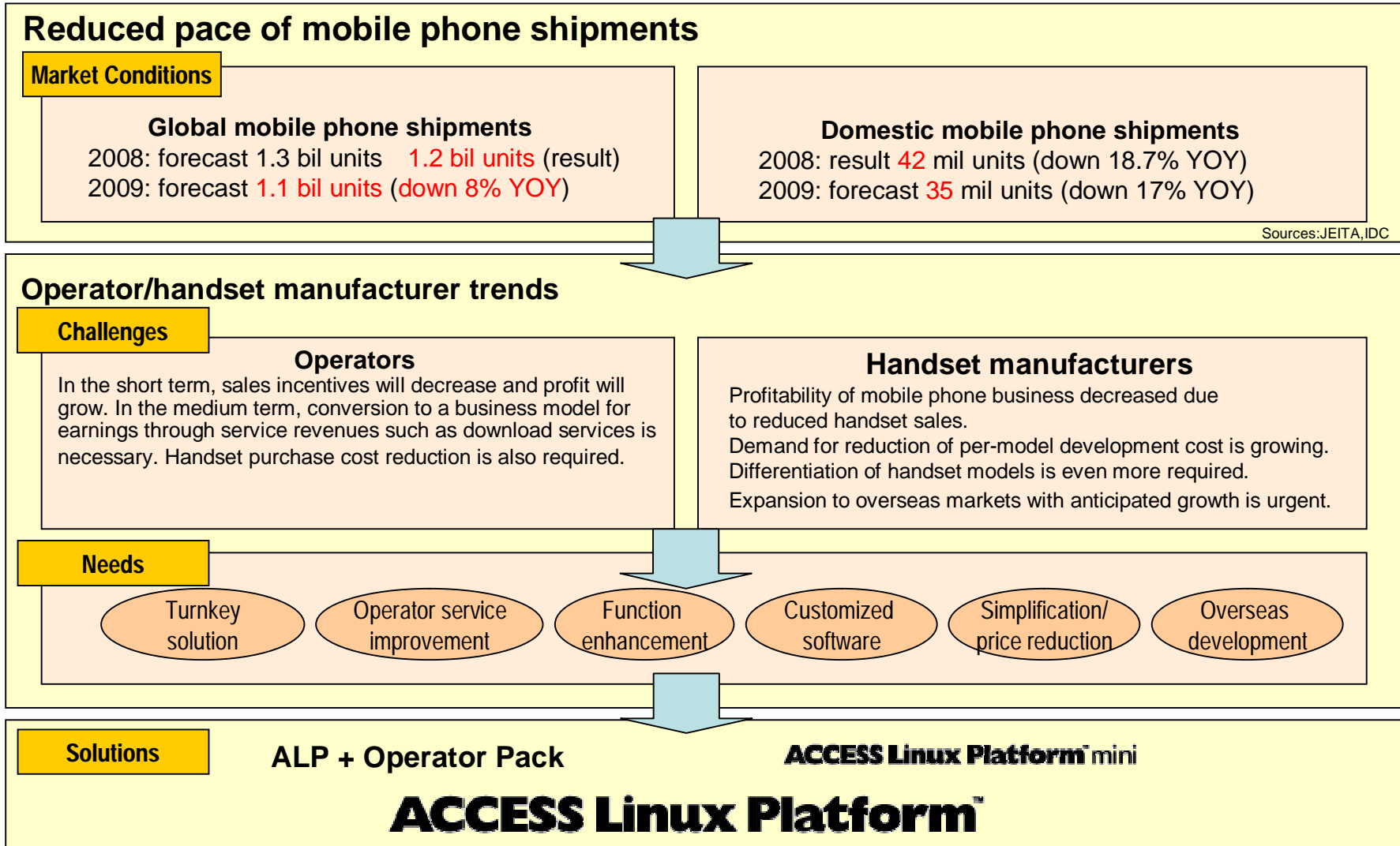
Main Products and Projects

I. ACCESS Linux Platform™ (ALP) Project

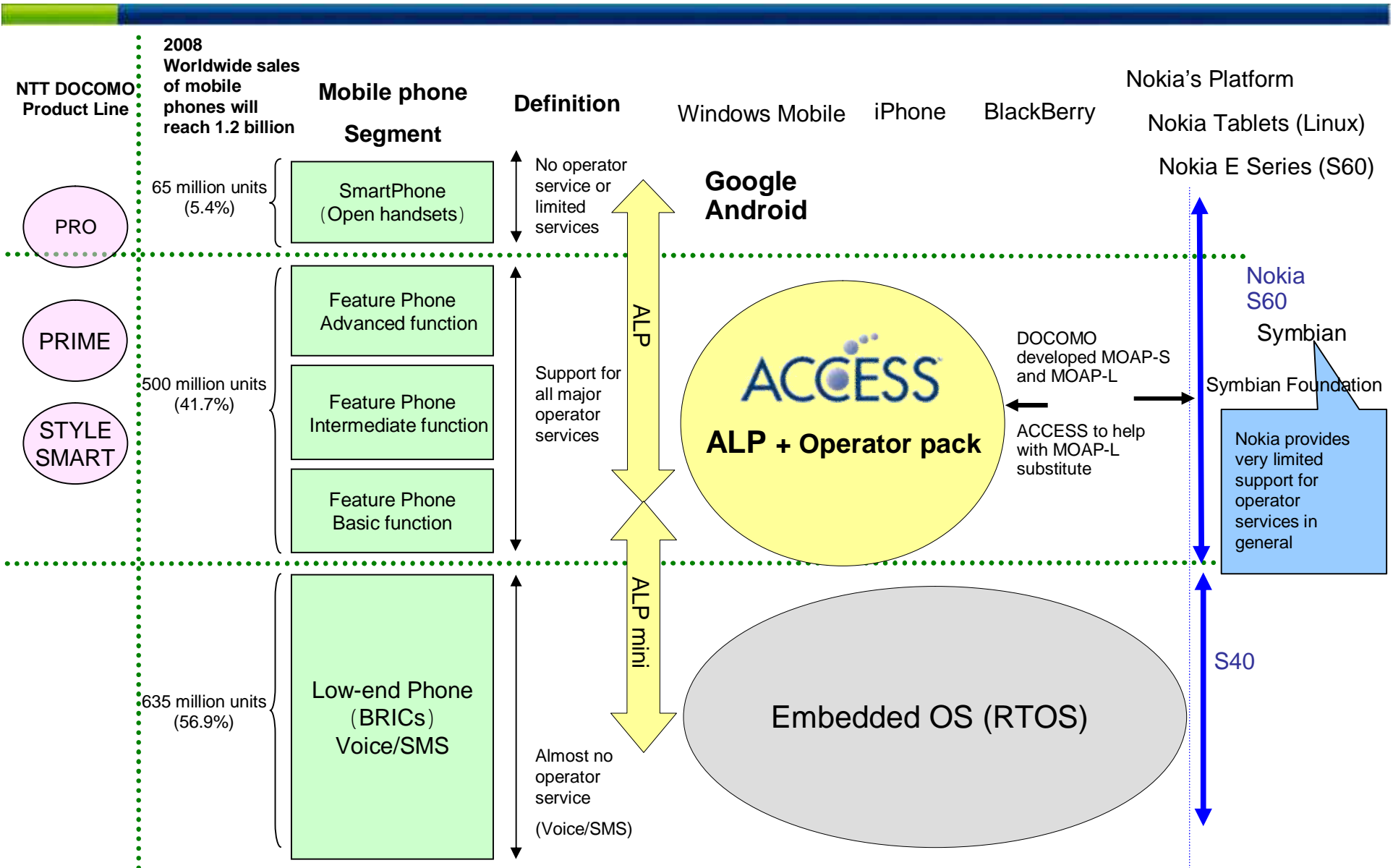
Environmental Changes in the Mobile Phone Segment: Favorable Conditions for ACCESS



○ Mobile phone industry trends



ALP is the Best Operator-Friendly Platform



ACCESS Leads the Market by Leveraging the LiMo Foundation



○ Features of the LiMo Foundation

- The LiMo Foundation is a non-profit industry consortium founded in January 2007, dedicated to creating “globally competitive” Linux-based software platforms for mobile phones
- LiPS, a consortium of leading industry players which also sought to develop Linux-based platforms, was merged with LiMo in June 2008
- With 6 newly-joined members in Feb, 58 companies in total have joined LiMo (as of March 25, 2009)
- ACCESS offers ALP-based LiMo Reference Platform (February)

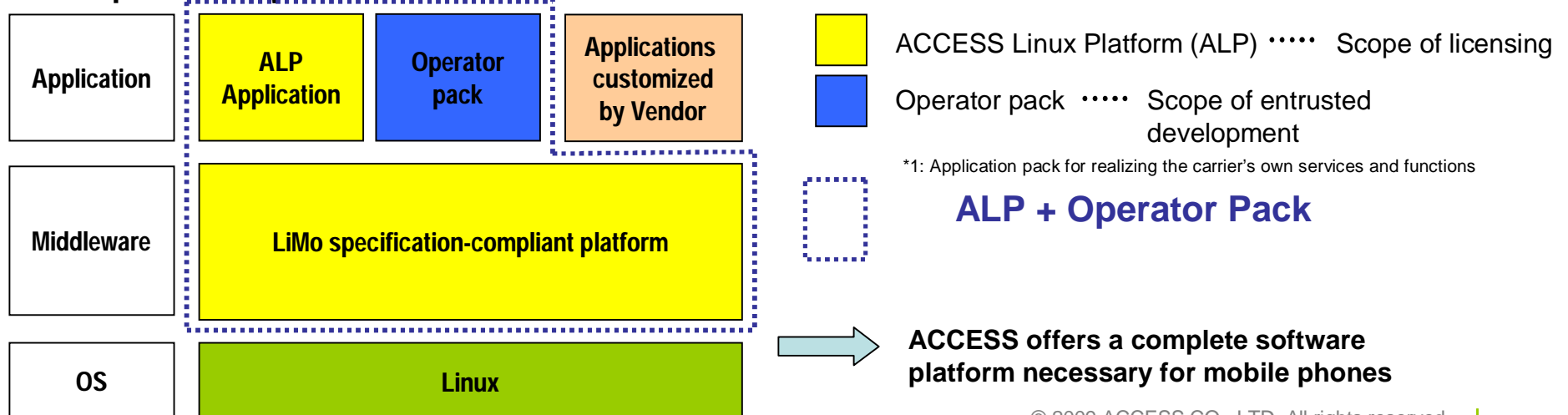
6 new members:
Casio Hitachi, Telefonica, Swisscom,
and 3 others

○ Challenges

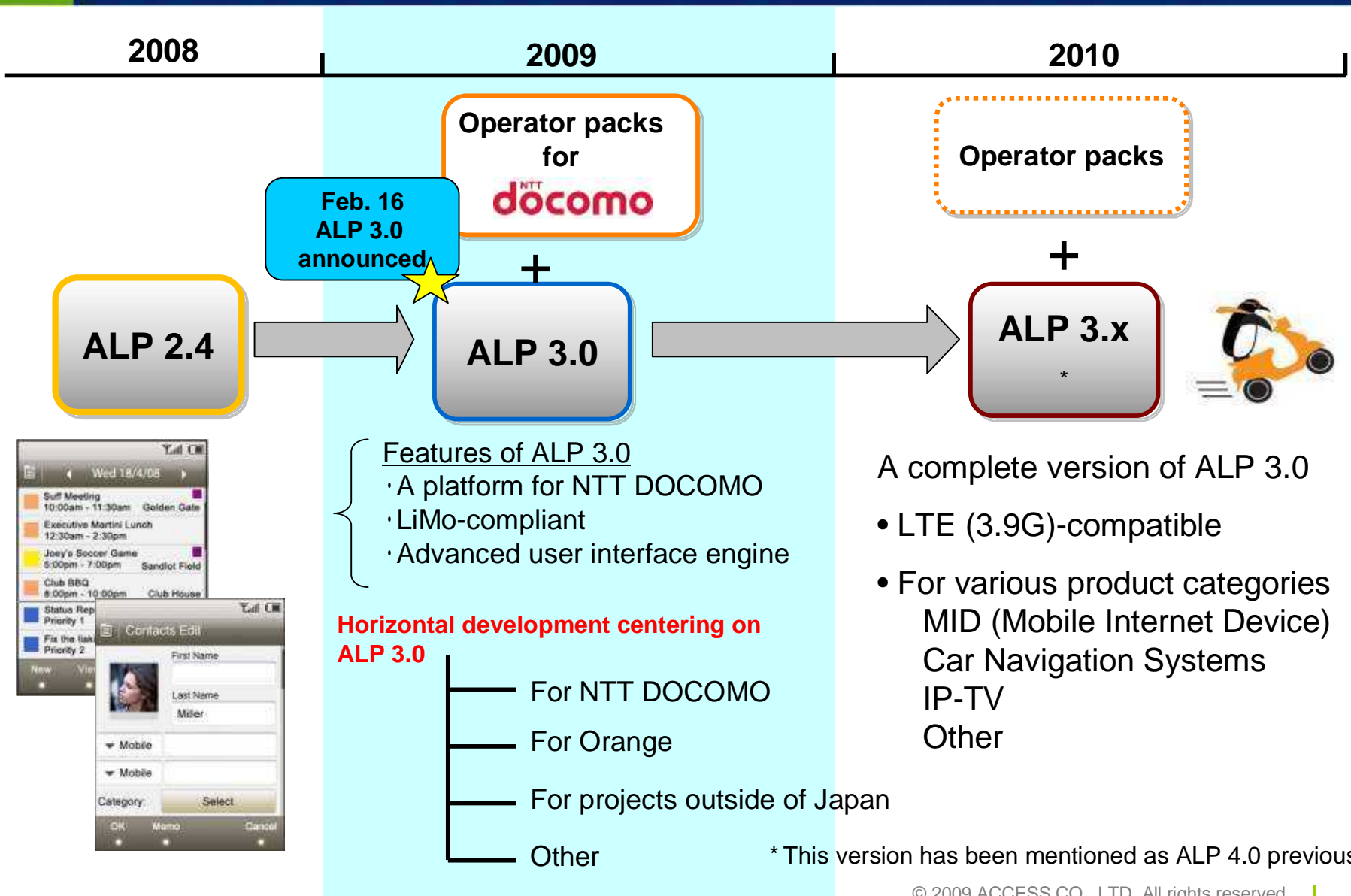
- LiMo provides only part of the software
- For the rest, companies need to acquire from others or develop themselves

○ What ACCESS offers

- A complete software platform for mobile phones including applications in addition to those provided by LiMo



Injecting Management Resources into a Full-scale DOCOMO Project



Status of Development of NTT DOCOMO Operator Pack



○ FY2008

- **2009 Autumn/Winter model base software development**
 - Basic technical specification creation completed Jul. 2008
 - NRE completed Jan. 2009
- **2009 Autumn/Winter model commercial software development**
 - Basic technical specification creation completed Dec. 2008

○ FY2009

- **2009 Autumn/Winter model commercial software development**
 - NRE
 - Support for vendor development

} To be completed Autumn/Winter 2009
- **2010 Summer model commercial software development**
 - Currently being planned

Complementing Low-end Linux Handsets with ALP mini



○ ACCESS Linux Platform™ mini announced (Oct. 20, 2008)

- ALP family for low-end handsets
- Compact Linux platform designed for handsets and information appliances with limited hardware environment
- High scalability and flexible customization



○ Joint development with NEC Electronics announced (Feb 10, 2009)

- Joint development of SmartPhone prototype
- Intended for CDMA2000 1x (one of China's 3G systems expected to grow rapidly)
- Support for communication standards such as 2.5G and 2.75G in addition to 3G

○ Projects in progress

- Commercial handset project for CDMA2000 1x underway
- Several projects underway, including PNDs (portable navigation devices)

Main Products and Projects

II. IPI Product Development

ZebOS®: Infrastructure Software for Network Equipment

Examples of Products with ZebOS



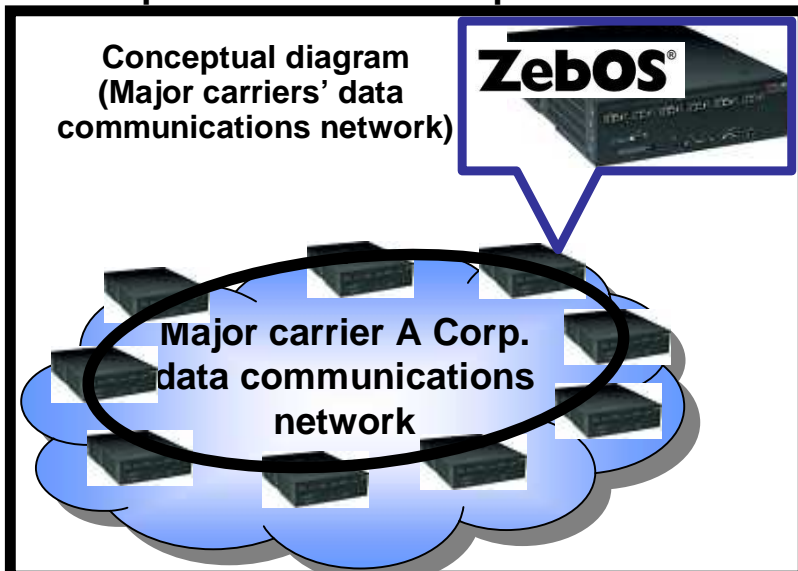
Customer name:
Furukawa Network
Solution Corp.



Device with ZebOS: FITELnet-G20/G21 Series
Application: network equipment
(**carrier network**)

Implementation:

- ✓ Carrier uses ZebOS for implementing economical and efficient data communications services for corporations
- ✓ **High-quality** corporate network
- ✓ ZebOS **reduced development cost by 50%** compared to self-development



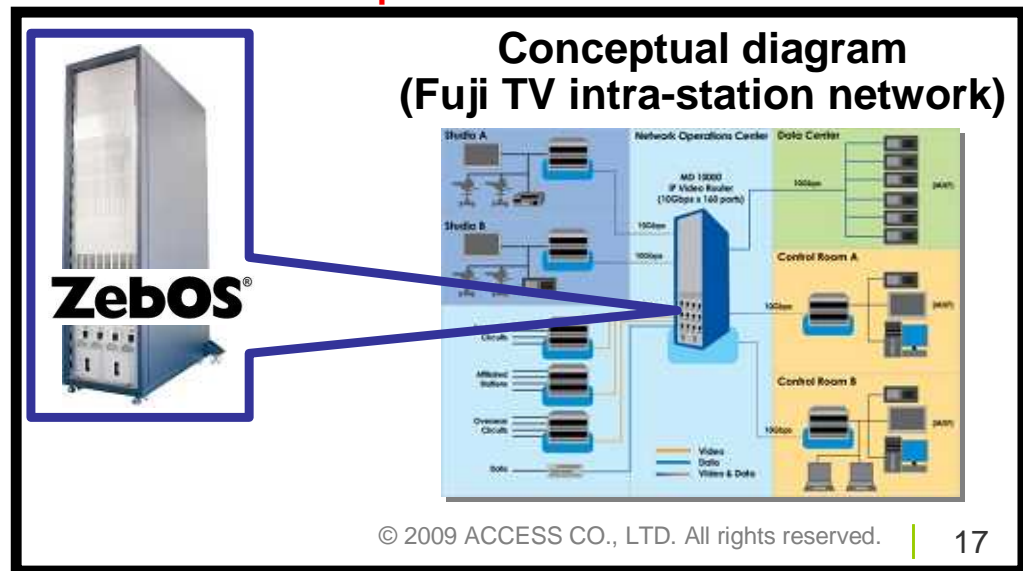
Customer name:
Media Global Links
Co., Ltd.



Device with ZebOS: MD-MAX Series
Application: broadcasting equipment (**intra-station network**)

Implementation:

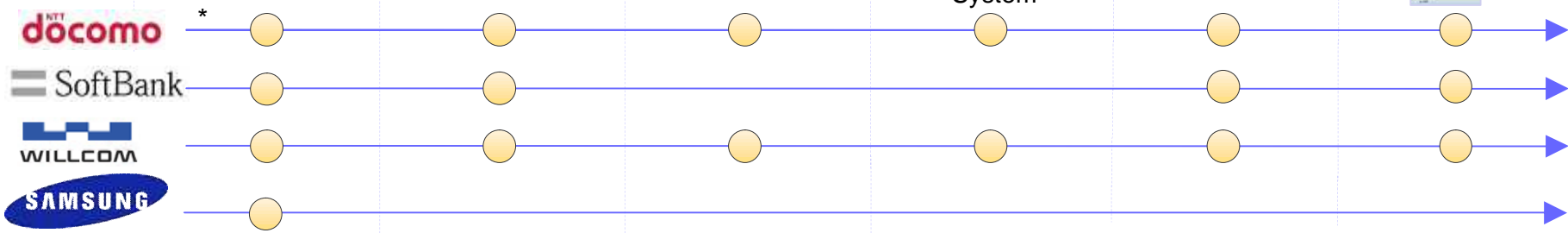
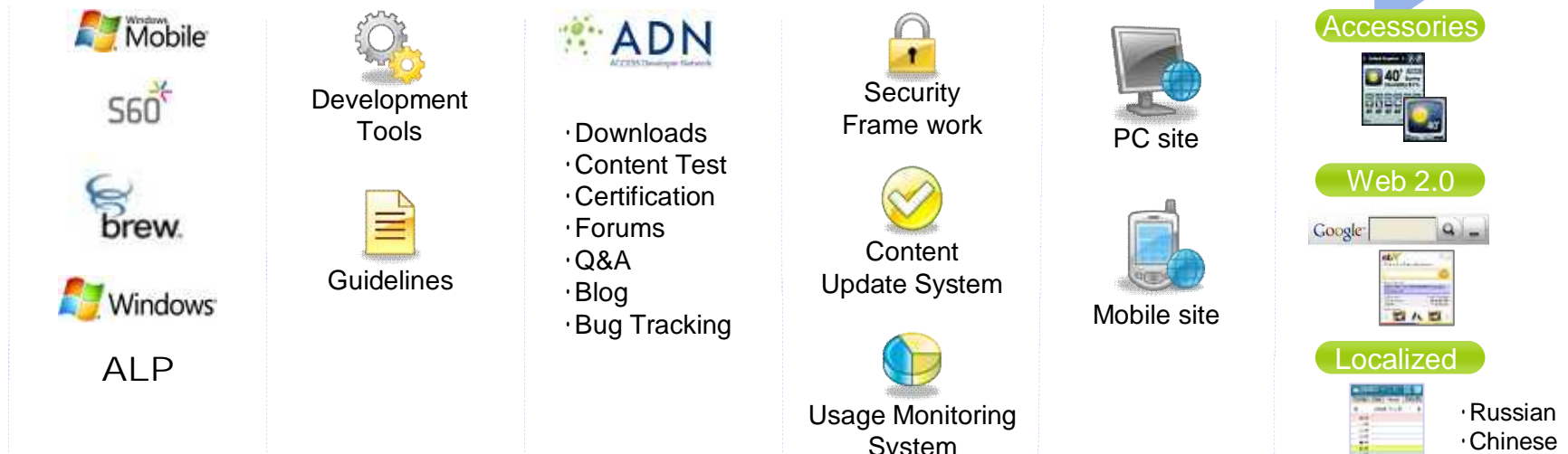
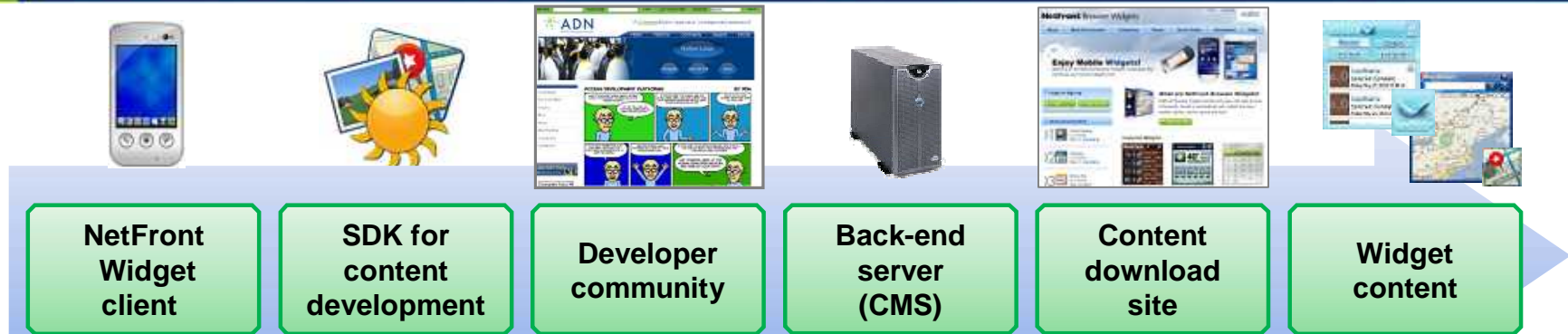
- ✓ Industry's first intra-station network via IP (Internet Protocol) network
- ✓ Used for Fuji TV intra-station IP/Ethernet network
- ✓ ZebOS is used in intra-station networks in which **large video data is transmitted in bulk and network failure is unacceptable**



Main Products and Projects

III. Evolution of NetFront™ Browser

NetFront™ Widgets Total Solution



* For SmartPhone

Main Products and Projects

IV. Media Service Business

Electronic bookstore (e-book) Website “Booker’s™ mobile bookstore”



○ Features of Booker’s

- Electronic bookstore mobile website in collaboration with Tokyo Bookshop Group
- Official mobile site authorized by au/KDDI
- Participation of ordinary bookstores to boost demand from book lovers as well as a younger demographic, the primary target for e-books
- 10,597 titles (as of Mar. 23)

○ Content development tools are important

➤ “NetFront™ Book Builder”

- Content creation tool



Creation tool window on PC



Preview window on PC

➤ “NetFront™ Book Viewer”

- e-book viewer



Menu window on mobile phone screen

How to access:

EZweb’s “Booker’s mobile bookstore”

From the top menu,

Category (menu list) >

e-Books, Comics, Photo Collections >Overall >Booker’s



Image displaying Booker’s top page



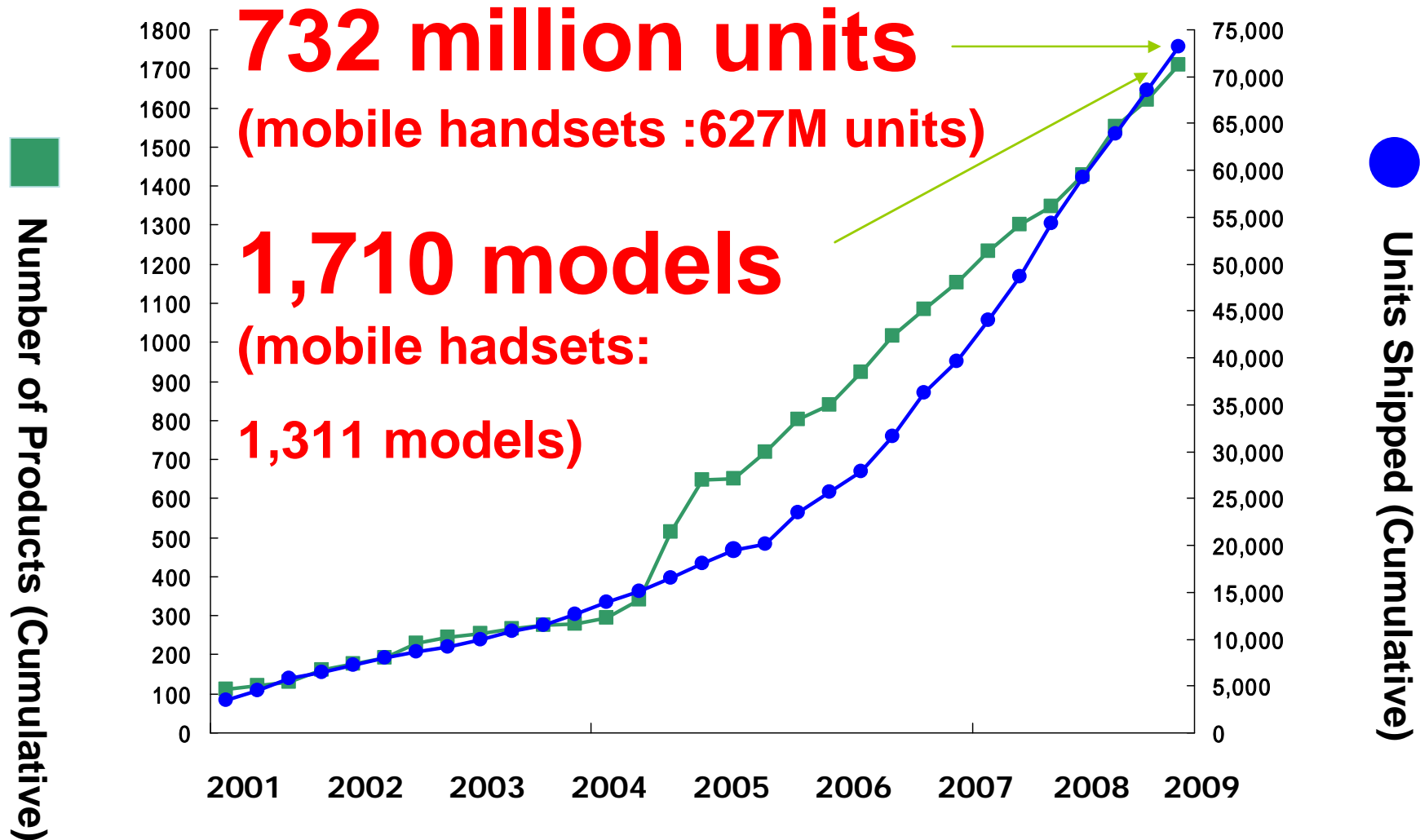
Appendix: Achievements from Existing Businesses

Over 700 Million NetFront™ Series Units Shipped (Cumulative)



(As of January 31, 2009)

(10,000 units)



Products from All Domestic Japanese Carriers - 2009 Spring Models



NTT docomo

au by KDDI

SoftBank

STYLE



PRIME



SMART



PRO



Products with ACCESS appeared in the 08 Winter/09 Spring models

WILLCOM



EM MOBILE



*1 Models compatible with Widget service

NetFront Can Also Be Integrated into Home Audio and Visual Electronics



Digital TVs **acTVila** **TV Tuners (12seg for PC)** **1seg USB TV Tuners** **Multi-function printers**



TOSHIBA REGZA
Z7000 series
ZH7000 series



HITACHI Wooo
UT 7700 series



IO DATA
GV-MVP/HX
GV-MVP/HS



IO DATA
GV-MVPHZ



Logitec
LDT-1S303U



I/O DATA
GV-SC300



KYOCERA MITA
KM3060



KM5050

NetFront can be used in acTVila-compatible TVs as well as Sharp AQUOS X series



Pioneer
KRP-600A
KRP-500A

Digital Tuners



SKY PerfectTV!
SP-HR200H



BUFFALO
LT-H90DTV



MIDs

SONY
Mylo

NetFront Browser powers advanced car navigation systems with Internet connection

Car Navigation



Pioneer Cyber Navi
AVIC-VH9000



Pioneer Air Navi
AVIC-T10

Car navigation system that enables you to connect your mobile device and PC. The system can provide useful information and recommendations through the website even when you are driving.



Panasonic Strada F Class
CN-HX1000D CN-HW1000D

Car navigation system that offers you various network services. For example, it enables you to link to your home network AV products and appliances and control them through your mobile with Bluetooth technology by using the navigation system



*ACCESS is mobilizing
high quality communication
and entertainment for
connected users around
the world.*

ACCESS、ACCESSロゴ、NetFront、ACCESS Linux Platformは、日本国、米国、およびその他の国における株式会社ACCESSの商標または登録商標です。 Booker'sは、株式会社ACCESSおよび東京都書店商業組合の商標です。 IP InfusionおよびZebOSは、IP Infusion Inc.の米国ならびにその他の国における商標または登録商標です。 The registered trademark LINUX® is used pursuant to a sublicense from Linux Mark Institute, the exclusive licensee of Linus Torvalds, owner of the mark on a world-wide basis. AndroidはGoogle Inc.の商標または登録商標です。 The Trademark BlackBerry® is owned by Research In Motion Limited and is registered in the United States and may be pending or registered in other countries. ACCESS CO., LTD. is not endorsed, sponsored, affiliated with or otherwise authorized by Research In Motion Limited. BLUETOOTHは、Bluetooth SIG Inc.が所有し、株式会社ACCESSはライセンスに基づき使用しています。 BREWはQUALCOMM Incorporatedの商標です。 iPhoneは、米国および他の国々で登録されたApple Inc.の商標です。 Nokia、S60は、ノキア・コーポレーションの登録商標、または商標です。 Windows Mobileは、米国Microsoft Corporationの米国およびその他の国における登録商標または商標です。 その他、文中に記載されている会社名、ロゴマークおよび商品名は、各社の商標または登録商標です。